



MMC INTERNATIONAL CORP

INSTRUCTION MANUAL

GAS TIGHT CLOSED SAMPLING SYSTEMS (1/2 LITER DIRECT SAMPLING)

NOTE: ONLY SUPPLIED PER PURCHASE ORDER SPECIFICATION

(SEE ADDENDUM TO THIS MANUAL FOR DRYNESS CHECKING ACCESSORIES)

**MMC INTERNATIONAL CORPORATION
INIP DRIVE
INWOOD, NEW YORK 11096**

TABLE OF CONTENTS

<u>SECTION</u>	<u>PAGE NO.</u>
I. 1.0 INTRODUCTION	1
1.1 SYSTEM OVERVIEW	1
II. 2.0 DESCRIPTION OF SYSTEM COMPONENTS AND FEATURES	2
2.1 SAMPLING TAPE AND REEL HOUSING	2
2.2 SAMPLING BARREL	3
2.3 ZONE SAMPLER, 1/3 AND 1/2 LITER	3
2.4 SAMPLE BOTTLE FILL ATTACHMENT	3
2.5 SAMPLE BOTTLES	3
2.6 SAMPLE COLLECTION DIVERTER VALVE	
2.7 SAMPLE VAPOR RETURN HOSE	3
III. 3.0 BASIC OPERATING PROCEDURE	4
IV. 4.0 SAMPLE COLLECTION WITH INERT GAS SYSTEMS	5, 6
V. 5.0 SAMPLE COLLECTION WITH NO POSITIVE TANK PRESSURE	7
VI. 6.0 OTHER EQUIPMENT FEATURES AND USAGE	9
6.1 MAIN REEL HOUSING PRESSURE-VACUUM PUSH BUTTON	9
6.2 TAPE WIPER USAGE AND LIMITATIONS	9
6.3 REEL HOUSING PRODUCT DRAINAGE AND OTHER FACTS	9
6.4 MAIN REEL ASSEMBLY, AND SAMPLER VALVE BARREL	9
6.5 SAMPLER VALVE CLEAN OUT PORT	10
VII. 7.0 SYSTEM GROUNDING AND OTHER GAUGING AND SAMPLING PRE-CAUTIONS	11
7.1 SAMPLING STATIC ACCUMULATOR PRODUCTS	11
7.2 DISPOSING EXCESS PRODUCT SAMPLES	11
VIII. 8.0 EQUIPMENT MAINTENANCE AND CARE	12
8.1 GAUGING TAPE GROUND CONTINUITY	12
IX. 9.0 GAUGING TAPE REPLACEMENT	13, 14
X. 10.0 VAPOR VALVE ADAPTERS, MMC AND OTHER TYPES	15
XI. 11.0 SOME FINAL WORDS	16
XII. 12.0 GENERAL GUIDE TO CHEMICAL RESISTANCE OF SUPPLIED SAMPLE BOTTLES	17
XIII. 13.0 WARRANTY	18
XIV. 14.0 TAPE REPAIR CENTERS	19- 26
XV. 15.0 REPLACEMENT PARTS LIST	27
XI. 16.0 LIST OF DRAWINGS	28
XVII. 17.0 ADDENDUM FOR DRYNESS CHECKING ACCESSORIES LIST OF DRAWINGS	29

SECTION I

1.0 INTRODUCTION

The MMC Closed Gauging Sampling System is a part of a growing family of MMC products, designed to make the Gauging and Sampling of bulk petroleum and chemical products, more accurate and safer.

The ease of use and safety in the utilization of MMC produced equipment is always foremost in the minds of our designers.

The use of MMC Restricted Gauging and Sampling Equipment, in conjunction with MMC Vapor Control Valves, is well known and established worldwide.

In keeping with a growing demand and in some cases prescribed legislation, MMC developed a Closed Hand Gauging System, which has the same gauging feature as its Restricted Hand Gauging Equipment.

The Closed Hand Gauging System, as does the Restricted Gauging System, allows an operator to determine cargo Ullage, Interface, and Temperature.

In addition, and as prime objective of the system design, operator exposure to product vapors virtually eliminated.

As a natural next step in the development of equipment for use in Closed Applications, MMC has also developed the Closed Portable Sampling System. Information on the Closed Portable Sampling System is available upon request.

1.1 SYSTEM OVERVIEW

MMC's Portable Close Sampling System and its sample collections valve, operates in conjunction with but independently of a cargo tank's existing vapor control valve. Once the system is attached to any MMC vapor control valve, an operator can extract and bottle a product sample in place, without transfer of the collected sample to another container.

In addition, and as prime objective of the system design, operator exposure to product vapors, and the traditional physical handling of the collected products, has been greatly reduced.

The system is gas tight and has been designed to meet or exceed the current vapor control regulations.

To achieve the above design goals, the system uses a unique combination of vapor return hose assembly, sample collection valve and sample bottle fill attachment.

System operation is simple, easily understood, and not complicated by the use of laboratory type accessories

The entire system is made in the U.S.A

SECTION II

2.0 DESCRIPTION OF SYSTEM COMPONENTS AND FEATURES (Please refer to Drawings S-2562-1SM, B-2562-406-PET)

2.1 CLOSED SAMPLING GAUGING TAPE AND REEL HOUSING

- 2.1.0 With reference to Drawing B-2562-406-PET, the basic components of the Closed Sampling Tape System are shown in pictorial form.

Drawing S-2562-1SM gives a more detailed description of the various features of the basic tape reel housing, which are common to the unit when constructed for cargo gauging usage or sampling application. When constructed, the units are for the specific purpose ordered, and are not interchangeable.

A full re-wind, tape-reading label is posted just below the sight port indicating the correct tape reading at the fully re-wound stop position.

The fully rewound stop position is mechanically set by an internal tape head stop bushing, located within the stub barrel piece attached to the tape wiper housing.

It is recommended however, that the operator visually sight the gauge tape reading to confirm full re-wind, before closing the associated vapor control valve or sampling valve.

The primary view port, located on the side of the tape reel housing, just above the tape wiper assembly, can be used for tape payout determination with reference to an established zero ullage reference point.

When used as such, and due to the equipment construction, a zero ullage correction must be applied to the sighted tape reading. An appropriate correction figure is posted just above this view port.

- 2.1.1 As also can be seen on drawing S-2562-1SM, a dual purpose winding crank is provided. At the completion of tape payout or re-wind operation, the crank may be re-positioned to serve as a tape reel lock. An operating instruction label is posted on the reel housing, adjacent to the handle drum.

Similar to the cargo-gauging unit, the sampling unit has other appropriate operation labels and caution notices. A spring loaded tape wiper and grounding cable are also supplied for the sampling unit.

An internal feature not shown in drawing S-2562-1SM, is the use of a spring loaded anti-rotation arm, which follows the sampling tape payout, and will stop reel motion when a tape is fully extended.

Please exercise special care when a gauging tape is fully extended so that the anti-rotation arm is not over stressed.

2.1.2 SAMPLING BARREL

Item 4 in drawing B-2562-406-PET is a separable piece from the main reel housing and sampling barrel.

This sub-assembly, has threaded top end to allow assembly to the main sampler barrel connector.

2.1.2 The short stub barrel piece, attached to the reel housing wiper assembly remains in place when the sampling collection diverter valve and sampler barrel are removed for storage.

2.1.3 Reference drawing B-2562-406-PET with items 1, 2, 3 assembled attach item 4 to the deck valve once attached assemble items 5 and 6 to complete the final assemble of the closed sampling system

2.4 SAMPLE BOTTLES

The sample bottle (s) supplied with the system are wide mouth, 1/2 liter capacity, high-density polyethylene type. Each bottle comes with its own self sealing cap and meets the requirements of the department of transportation, DOT-2E, for packaging and transportation of hazardous materials. (See section IX for specifications and chemical compatibility.)

2.5. NOTICE

Please be aware that transportation of hazardous materials requires special external packaging, handling, and or other specific carrier requirements.

It is solely the responsibility of the end user of the sample bottle(s) supplied by the MMC, To determine if it is suitable for the intended collection, storage or transportation of a product, whether its be classed petroleum by-product, chemical or other such fluids, generally known to be hazardous by their natural or manufactured nature.

2.5.1 The 1/2 liter sample bottle(s) supplied are only intended for use with supplied MMC sample fill attachment.

2.5.2 One liter capacity bottles are also available. The use of one liter capacity bottles require a different fill assembly, due to the larger mouth of this size bottle fill attachment, please consult factory for ordering details.

2.6 Vapor Return Hose

As shown on the drawing B-2562-182-PET, B-2562-182 and A-2562-183, the vapor return hose is connected at one end to the sample fill attachment, and at the other end to the vapor return check valve fitting mounted on the tape wiper housing. The quick coupling hose fitting supplied for this connection depresses the fixed check valve, and thereby allows free gas fl

SECTION III

3.0

BASIC OPERATING PROCEDURE

(PLEASE REFER TO FIGURE 1 (CLOSAD44.SKD), AND DRAWINGS B-2562-406-PET

As can be seen in FIGURE 1 (CLOSAD42.SKD), a simple 4-step procedure is described.

The enlarge details of the sampler barrel , pictorially illustrates the stages of operation.

Notice that pictured in stage (1) the bottom of the zone sampler can be seen as it would appear with its associated gauging tape at its fully re-wound and locked in place condition.

Stage (2) shows that the zone sampler has been lowered for sample collection to some desired ullage level, or is in transit to an operator pre-determined cargo level.

Stage (3) Shows tape payout through window view port in the tape reel housing

Stage (4) Shows a filled sampler tube returned to its full stow position. The gauging tape reel should at this time be locked in place with the provided reel drum handle lock. See drawing S-2562-1SM. (The Sampler collection Assembly Valve Sampler Barrel)

Stage (5) shows a product filling the view port window, after the zone sampler has been lowered against the previously closed sampling collection assembly valve.

The above assumes that the flow control valve of the attached sample bottle fill attachment, has still been left in its recommended starting closed position.

Therefore at this stage, the fluid sample has only been released to the interior of the sampler Barrel by the action of lowering the ball check zone sampler tube against the surface of the interior ball of the sampler valve.

To insure full opening of the ball check at the bottom of the sampler tube, the sampler valve ball has built-in spring-loaded pusher pin which is released when the sampler valve was placed in its closed position.

The spring-loaded pusher pin is automatically aligned with the zone sampler axis when the sampler valve was placed in its closed position. This action insures that the zone sampler ball check valve is fully pushed up, allowing free liquid flow.

When the sampler valve is in its open position, or in transit to the open position, the pusher pin is depressed, but does not enter through the bore of the ball of the sampler valve. This feature insures free passage of the sampler tube through the valve.

The only remaining step is to now collect the extracted sample within the provided sampler bottle(s).

SECTION IV

4.0 SAMPLE COLLECTION WITH INERT GAS SYSTEMS

The prior section has discussed the basic operating procedure to extract a product sample from a typical ships cargo tank, equipped with an MMC vapor control valve.

The actual collection and bottling of the extracted sample, including the use and function of the sampling unit's vapor return system will now be discussed.

The discussion in section 3.0 in conjunction with the flow diagram test of FIGURE 1 (CLOSAD44.SKD), provides a quick and easy understanding of the basic operational procedure.

However, at first review the need for the vapor return hose, and use of the fill attachment sample flow control valve, may not be fully understood.

Obviously by name, the vapor return hose assembly is meant to return vapor from the fill attachment sample bottle to the tape housing.

One may wonder why it's starting with clean sample bottle, and then open the fill attachment sample control valve, allowing the extracted sample to fill the bottle and displace the clean air within it, would it matter to simply allow the bottle to vent atmosphere?

Of course, one obvious reason would be that we wish to avoid possible vapor emission, but we also must bear in mind that we are about to empty a sealed container with liquid in it.

Let us review for minute, how we have arrived at the point of filling the sample bottle.

We first opened both the vapor control valve and sampling valve, lowered our sample tube, allowed some dwell time, then steadily raised the sample tube to its full stow position within the sample valve barrel attachment to the tape housing.

Having then visually confirmed the full stow position at the primary sight port, we closed the tanks vapor control valve, thereby disconnecting us from the product tank, and its internal tank pressure.

We then closed the sample valve, allowing its spring-loaded push button to rise up.

We then lower our sampler tube, and in so doing pushing up its internal ball check valve, allowing product to flow out the sampler tube into the sample valve interior.

We have yet to open the fill attachment sample flow control valve.

However, if we consider that the tank from which we extracted the sample may have had some positive pressure above the liquid level, primarily due to an inert gas system, we will have also trapped some positive pressure within the connected tape reel housing and sampler valve attachment.

The actual amount of pressure trapped within the connected sampler assembly will not be a constant, but will vary from site to site. In most cases, the sampling assembly will cool the trapped vapor and slightly lower its pressure reading.

When we now slowly open the fill attachment sample flow control valve, any interior positive pressure should assist in pushing the extracted sample into the sample bottle.

However, with the vapor return hose connected as previously described, a pressure balance between the interior housing pressure, and sample bottle, has been established. As the bottle is filling and thereby displacing the air/vapor, mixture within it, a declining but balancing pressure is being maintained within the bottle. Therefore, a sudden burst of fluid into the sample bottle will not occur, and fluid flow will mainly be due to simple gravity flow.

Normally with the minimum amount of pressure capacity trapped within the sampling system, at the near completion of bottle filling, little or no positive pressure remains trapped in the system.

However, before removing a filled sample bottle, close the sample flow control valve, and disconnect the vapor return hose.

In summary then, were it not for the balancing vapor flow path established by the vapor return hose, an unwanted burst of product sample into the same bottle would occur.

Apart from the above, but in the case of a tank or vessel not having any significant positive pressure, the possible development of an interior negative pressure becomes of concern, as discussed in section 5.0.

SECTION V

5.0 SAMPLE COLLECTION WITH NO POSITIVE TANK PRESSURE

In the case of extracting a product sample from a tank with little or no positive pressure, the basic procedure described in section 3 and 4, is the same.

However, and again bearing in mind that we are dealing with gas tight closed system, the vapor return hose plays another important function.

It may be easy to consider why this is so by the following analogy.

- 5.1 When we fully stowed the filled sampler tube within its barrel housing, and closed both the vapor control valve and sampler valve, and then lowered the sampler tube to release the extracted fluid from within it, we have in essence a container with liquid at the bottom with some product vapor above the liquid.

In the process of releasing the extracted fluid from the sampler tube, we simply exchange the interior location of the liquid and air vapor mixture.

The liquid is now at the bottom of the container, or for instance and in this case, a metal can, with a mixture of air and product vapor above it.

If we now open the fill attachment sample flow control valve, product will begin to fill the bottle, but at the same time were it not the vapor return hose returning to the system, the same amount of air displaced from the sample bottle we would at some point develop a negative pressure above the outgoing fluid. If this condition were allowed, product flow would soon diminish to trickle.

- 5.2 To complete our analogy, were it now not for the vapor return hose, the situation would be similar to punching one hole in the top of a can of oil holding a finger over the hole while turning the can upside down, and expect it to completely empty the can.
 - 5.2.1 From ordinary experience we know that the can does not completely empty. However, the reason it does not empty may not be obvious. The answer of course is that a pressure imbalance between the greater outside atmosphere pressure and the lesser interior void space pressure above the liquid in the closed end of can has developed.
- 5.3 In the special case of those products requiring a later read vapor pressure measure, the development of a negative pressure above the product sample would not be desirable
- 5.4 The above now completes the description of sample collection during typical cargo tank internal conditions.
- 5.5 Please also refer to section VII for other important considering, and recommended practices.

SECTION VI

6.0 OTHER EQUIPMENT FEATURE AND USAGE

6.1 MAIN REEL HOUSING PRESSURE -VACUUM PUSH BOTTOM

Situated at the top of the main reel housing is a push button spring-loaded valve.

This valve is a carry over from the standard closed Gauging Unit, where it serves a different purpose then used on the closed sampling unit.

In the case of the closed gauging unit it is mainly used as a vacuum breaker to assist in the withdrawing the units "B" type sensor storage barrel, from the "O" ring sealed barrel entry into an MMC vapor control valve.

- 6.1.1 In case of sample collection, as described in section 5, the valve should be depressed to verify. Complete draining of the extracted sample
- 6.1.2 Be aware however, that this valve should not be depressed during sample collection as described in section 4.
- 6.1.3 The black nylon actuator of the push button assembly, can be unscrewed from the check valve to which is attached,. This check valve is similar to the previously described vapor return hose check valve.
- 6.1.4 With the nylon actuator assembly removed, this with an appropriate connection fitting can be used for the attachment of a pressure gauge. A 5-PSI full-scale pressure would be suitable for product tank pressure measurements. Full-scale pressure would be suitable for product tank pressure measurements.

6.2 TAPE WIPER USAGE AND LIMITATIONS

The Tape wiper housing between the main reel housing and stub connection barrel, contains a spring loaded hand knob actuated wiper assembly.

When re-winding a gauging tape with its attached sample tube to the full stow position, it is recommended that the wiper be used.

It is our experience that no wiper construction can do a perfect tape cleaning for all products encountered in the field. However, the presently included tape is adequate for most products.

- 6.2.1 The wiper assembly is plate mounted to the wiper housing with four socket head screws. Removal of these screws allow complete removal of the assemble from the housing
- 6.2.2 The wiper blades are of viton material and are easily cleaned or replaced. The plate end of the wiper blade shafts are gear operated with nylon gears, and "O" ring sealed against the mounting plate.

- 6.2.3 For closed gauging and sampling applications, the wiper assemble mounting plate is gasket sealed when assembled to the wiper housing. In the event of wiper replacement or cleaning, the sealing gasket between the mounting plate and housing should always be replaced with the original or new gasket.
- 6.2.4 The wiper has been intentionally spring loaded to avoid lowering a tape without having first released the wiper

Experience has shown that with a closed assembly, it is easy for the operator to begin lowering a tape without first releasing a tape without first releasing a previous locked wiper. The end result of such a mistake is broken or badly kinked gauging tape.

While it is of some inconvenience to have to hold the wiper closed when re-winding a tape, a tape assembly still mounted to a vapor control valve, does allow a comfortable two hand operation, without undue operator stress.

6.3 **REEL HOUSING PRODUCT DRAINAGE AND OTHER FACTS**

The bottom of the reel housing has been so designed as to allow any product accumulation due to excess product dripping from a re-wound tape, to return back and through the tape wiper housing and attached barrels, to the source tank.

However, its recommended that the reel housing cover be removed for interior inspection and clean out as necessary.

The frequency of this inspection and clean out largely depends on the types of products being sampled. Obviously the more viscous product will require greater housekeeping.

The interior of the main sampler housing is nylon coated throughout. Other interior parts being either nylon coated or otherwise treated to allow easy clean out with standard cleaning solution.

6.4 **VIEW PORTS, MAIN REEL ASSEMBLY** (PLEASE REFER TO DRAWING A-2562-146)

The gauging tape viewing port provided with this equipment, employs specially tempered glass.

It is easily removed for cleaning or replacement purposes.

- 6.4.1 It is not claimed that this ports will always provide a perfectly clear view of the gauging tape. However, the location and size is a compromise between ease of use, function, and the maintenance of gas tight unit.

6.5 **SAMPLER VALVE CLEAN OUT PORT**

In line and opposite the sampler valve drain port, a similar pipe plugged port is provided.

If desired, this port can be used as an alternate drain port location.

The opposite in-line port can also serve as a blow out port for cleaning purposes.

While other uses of this auxiliary port can be imagined, it is not recommended that such be attempted without a thorough understanding of the basic system operation.

SECTION VII

7.0 SYSTEM GROUNDING AND OTHER GAUGING AND/OR SAMPLING PRE-CAUTIONS

As previously mentioned, the sampler assembly is provided with a grounding cable.

It is recommended that the sampler assembly grounding cable be properly connected to a known good hull or vessel ground, at all times during usage.

However, please also refer to the specific equipment grounding directives of your company or other regulatory bodies, which should be strictly adhered to, as the primary operator responsibility.

- 7.1 The sampling of products known to be static accumulators, should only be carried out with prior approval of the local site authorities.
- 7.2 In the process of sample collection, excess product may remain within the sampling valve interior, due to sample bottle capacity. This may be the case when double dipping using a 1/3-liter sampler, with a 1/2-liter sampler bottle.
- 7.3 In the case of sampling static accumulative type products, the above procedure is not recommended without an inert gas blanket over the product.

In the later case, the excess product should be collected in another sample bottle, and either returned to tank by approved means, or otherwise safely disposed of.

- 7.4 The sampling of certain products may require the use of the other special protective devices. The sole use of this equipment does not eliminate the need for such additional protective measure , unless so authorized by responsible parties.

SECTION VIII

8.0 EQUIPMENT CARE AND MAINTENANCE

The care and maintenance of this equipment is the responsibility of the end user.

Depending on the types of different products which are to be sampled, the necessity for cleaning of the interior of the reel housing becomes self-evident.

The sampler valve barrel and associated equipment, are easily cleaned with any standard cleaning solution or solvent.

- 8.1 The gauging tape, which serves to raise and lower the provided sampler tube, is also used to provide a ground path between the sampler tube and main reel housing.

The continuity of the gauging tape ground path should be verified at frequent intervals. A simple Ohm meter check is all that is required.

- 8.2 The lack of ground continuity through the gauging tape to the main reel housing and then to the Hub-grounding cable, is a cause for concern.

A first check would be grounding cable to housing, and then gauging tape snap hook end.

- 8.3 A Gauging Tape with broken or fractured steel core should be replaced.

- 8.4 If a gauging tape requires replacement, please be careful to notice the order of parts removal, to insure a correct re-assembly. Always re-check ground continuity upon completion of a gauging tape replacement.

- 8.5 A Removed reel housing cover with its associated sealing gasket, should be routinely inspected for damage.

If this gasket is found to be in anyway questionable, it should be replaced with new and un-greased gasket. All cover hold down screws are "O" ring sealing type. They should not be replaced with ordinary machine screws. Upon cover replacement, an even cross order or screw tightening should be carried out.

- 8.6 In order to maintain the factory delivered gas tight condition of this equipment, a supply of all necessary gasket and seals should be on the hand before any repairs are attempted.

- 8.7 Routine low-pressure (5-PSI)-assembly leakage check should be performed. To properly perform this test, a precise control on an air source and accurate low-pressure gauges are required.

It is recommended that such testing be only performed by qualified personnel or an authorized repair center.

SECTION IX

9.0 GAUGING TAPE REPLACEMENT

(See drawing I-2562-181)

The gauging tape used for the sampling system is similar to the gauging tapes used for MMC'S electronically operated gauging tapes.

The tapes used are chrome brush Stainless Steel.

Gauging Tape replacement is not difficult, but requires careful attention to the travel path of tape its exits from the tape reel assembly, Passes over the interior guide rollers, cursor pin assembly, Anti-Chafing rollers and through the wiper housing.

- 9.1 To replace a tape, remove the sampler, tape wiper assembly, stub barrel connector and main reel housing cover.
- 9.2 With the main reel housing cover removed, the tape reel and tape pay out through the wiper housing can be seen. Take careful note of how the tape is directed around the various roller and guides. (See drawing I-2562-181). In particular, note the tape path between the upper right roller, the guide roller just below it, cursor pin assembly, and tape wiper housing split ring bushing.
- 9.3 With the above in mind, or recorded with a simple hand sketch, the screws holding the reel hub cover can be removed. The reel hub cover is both a reel interior cover, and also the reel drive shaft to reel driver. The underside of the cover has a crossbar, which couples it to the reel drive shaft assembly. The coupling action is accomplished by means of the cover cross bar engaging the slotted ends of the drive shaft assembly.

With the reel hub cover removed, note that the outer reel plate is still retained to the reel hub core by single flat head screw.

Note that directly opposite the flat head screw (180° away) a small pinhead can be seen in a reel plate hole on the same screw hole diameter as the flat head screw. Also note, that the screw hole and pin are at this time, aligned with drive shaft coupling slots.

The interior hub end of the gauging tape is now also in view, Note the placement of the terminating epoxy molding piece at the end of the tape within the hub core. Also, note the two black grounding wires leading out from this molding.

- 9.4 Remove the two-grounding screws attaching the black wire leads from the tape to drive shaft and reel core.

- 9.5 Unlock the tape and wind the tape reel so that the molded snap hook end is drawn up through the wiper housing into the reel housing interior. (Note: The Stub Barrel Connector attached to the tape wiper housing, must have first been removed. When removed, the tape full rewind stop bushing at its top end, can be pushed out and removed from the tape.

Remove the flat head screw holding the outer reel plate to the reel core.

Note that the spring-loaded anti-rotation arm can now be seen pressing against the outside layer of the tape. With a little manipulation, the old tape can now be lifted away from the fixed inner reel plate.

- 9.6 A new tape can now be installed in a reverse manner. However, to make this process easier, be sure to correctly place the new reeled tape on the hub core first, with the reel housing in a flat horizontal position. Insure that the anti-rotation arm is now again pressing against the outside layer of the new tape.

- 9.7 Unwind enough tape to bring the snap hook end down through the tape wiper assembly, without passing it around the interior rollers and guides.

As soon as enough slack tape is let out, replace the outer reel plate and its flat head screw attachment to the reel core.

The slack tape can now be positioned around the interior roller and guides with this basic tape placement accomplished, the tape reel core and drive shaft ground screws can be replaced.

With the partially assembled tape reel still freewheeling on the drive shaft, align the slotted end of the shaft, align the slotted end of the drive shaft, to be in line with the flat head screw on the outer reel plate and the reel core stop pin directly across from it.

The reel hub cover can now be re-installed by visually aligning its underside cross bar with the drive shaft end slots. Replace all core cover screws.

- 9.8 With all interior parts in place in place and correctly positioned, check by ohm meter, that the snap hook end of the tape is grounded to the main reel housing.

With tape ground confirmed, the main reel housing cover can now be replaced. The screws provided for cover attachment to the main reel housing, have built-in "O" ring head seals. Do not replace these screws with ordinary machine screws.

- 9.9 Re-install the wiper housing, being sure to replace its mounting plate to the wiper-housing gasket.
- 9.10 Reinstall the stub barrel piece into the tape wiper housing. Be sure to first replace the split full stop bushing into the top of the barrel adapter.
- 9.11 As a final check, the gauging tape may be hand unwound from the reel to its full length, at which time the anti-rotation arm engagement should be confirmed
- 9.12 Rewind- the freed tape with some slight hand drag.

SECTION X

10.0 VAPOR VALVE ADAPTERS AND OTHER TYPES

(Please refer to Drawings A-2562-190 and A-2562-192)

At the time of this manual writing, the above mentioned outline drawings illustrate the available adapters for the use on other MMC series vapor control valve, as well as other manufacturer's types of vapor control valves.

These adapters are simply attached to the end of the supplied sampling valve barrel.

- 10.1 The end user is however cautioned that these adapters are used additional corrections to a "Zero" Ullage reference point will have to be applied as necessary.
- 10.2 Request for other special valve adapters will be quoted upon request please have available dimensional and mechanical details of the intended valve.

SECTION XI

SOME FINAL WORDS

It is always the intention of the designers of the specialized equipment to present to the end user something better than that which came before its introduction.

The present sampling equipment you have purchased from MMC was so conceived while its is truly hoped that the equipment will prove its worth, we here at MMC are always open to your constructive suggestions for improvement.

Please also feel free to contact MMC directly for any further technical advice or procedure recommendations.

SECTION XII

GENERAL GUIDE TO CHEMICAL RESISTANCE OF SUPPLIED SAMPLE BOTTLES

MATERIAL: (BOTTLE AND CAP) FLUORINATED HIGH DENSITY POLYETHYLENE

MAXIMUM TEMPERATURE +120° C TO -100° C

COLOR: TRANSLUCENT

Meets the U.S. Department of transportation, DOT-2E requirements for packaging and transportation of hazardous materials. (See also caution Notice Section 2.6.1 of the instruction Manual).

Chemical Class	Rating
Acids, Dilute or Weak	Excellent
Acids, Strong and Concentrated	Excellent
Aliphatic Alcohol	Excellent
Aldehydes	Good
Bases	Excellent
Esters	Excellent
Hydrocarbons, Aliphatic	Excellent
Hydrocarbons, Aromatic	Excellent
Hydrocarbons, Halogenated	Good
Ketones	Excellent
Strong Oxidizers	Fair

The above guide is provided solely as general overview of chemical compatibility. Compatibility with specific chemicals should be further investigated before usage.

MMC does not make or claim suitability of the supplied sample bottles as being approved for sampling usage by any specific regulatory body, or in meeting the requirements of any industry, or testing society standard.

SECTION XIII

WARRANTY

MMC CLOSED GAS TIGHT SAMPLING SYSTEMS

The seller, MMC or its licensed agents, fully warrants equipment of its manufacture against defects in materials or workmanship for a period of one year from the date of shipment. No other warranty period, in excess of one year, may be expressed or implied by sub-agents or others, unless authorized in writing by MMC. The liability of the seller under this warranty is limited, at seller's option, solely to repair or replace with equivalent equipment.

The seller, upon the expiration of the warranty period, has the option to apply a limited credit, not to exceed the original equipment sales price, toward the purchase of a new piece of equipment, if returned equipment is beyond reasonable repair. In any event, non-warranty repair charges will be quoted to buyer, for authorization, before repair work commences.

In the Event of Returns for Warranty Repairs:

- A. The buyer is to notify the seller in writing upon discovery of the defects.
- B. Upon receipt of written authorization from the seller, the equipment is to be returned as directed, transportation prepaid by the buyer.
- C. Buyer is to disclose the use of this product within hazardous chemical substances. It is the responsibility of the buyer to clean or decontaminate this product before returning for repairs. Buyer's refusal will void repair warranty at seller's option.
- D. If seller's examination of such equipment disclosed to his satisfaction that defects were not caused by negligence, misuse, improper installation, accident or unauthorized repair or alteration by the buyer, repairs will be immediately affected.
- E. Buyer is to provide shipping instructions for the return, including mode of transportation.

This warranty does not include mechanical parts failure due to wear or corrosion from normal usage, nor does it cover limited life electrical components, or elastomer seals.

This warranty is in lieu of all other warranties, expressed or implied, including that implied of fitness for a particular purpose to the original purchaser or to any other person. Seller shall not be liable for consequential damages of any kind.

IMPORTANT:

The equipment has been certified as intrinsically safe instrument for only those classes or categories of hazardous areas so stated on the equipment label, bearing the mark of the applicable approval agency. No other usage is implied or otherwise authorized.

Unauthorized repair or component replacement by the user, will void this warranty, and may affect the intrinsic safety of the equipment.

JANUARY 2000

SECTION XIV

GUIDELINE FOR REPAIR

In order to maintain the validity of the approval, tape units can be repaired only by MMC or our authorized guarantee repair offices approved by FM, BASEEFA/SIRA, CSA, SAA and/or NKK. We can not offer that approval; it must be given by the approval agency.

To maintain our agreement with the above mentioned approval agencies and yet accommodate our customers as much as possible, we have developed three sets of modules, which can be purchased as units and installed by the owners of tapes. However, we must know the serial number of the tapes involved in order to maintain our records properly.

The Modules Developed are:

TAPE WIPER ASSEMBLY, Consisting of wiper blades, ON/OFF Knob, mounting plate and screws.

At the present time, the following is a list of our guarantee repair offices throughout the world.

U.S.A.

MMC International Corporation (USA Main Headquarters)
60 Inip Drive,
Inwood, NY 11096
Phone: 516-239-7339
Fax: 516-371-3134
E-Mail: mmcinwd@aol.com

Giangerlo Scientific Company (Sales Only)
162 Stevben
St. Pittsburgh, PA 15220
Phone: 800-229-8850 Phone: 412-922-8850
Fax: 412-922-9047

ERL (Mid-South USA Sales)
2560 Charlestown
Road New Albany, IN
47150 Phone: 812-948-8484
Fax: 812-944-8808
E-mail: erlsales@mail.erlinc.net

ICL Calibration Laboratories Inc. (Sales & Service)
1501 Decker Ave.
Suite 118
Stuart, FL. 34994
Phone: 772-286-7710
Fax: 772-286-8737

PEI Midsouth, Inc. (Sales)
201 Holiday Blvd., Suite 304
Covington, LA 70433
Phone: 504-898-6343
Fax: 504-898-6331
E-mail: Lperrin@peigroup.com

Coastal Calibrations & Repair (Sales & Service)
13601 River Road
Luling, LA 70070
Tel: 985-746-9301
Email: ccr@coastalcalibrations.com
Website: www.coastalcalibrations.com

Coastal Gulf & International (Sales & Service)
P.O. Box 429
Kenner, LA 70063-0429
Tel: 985-785-0765
Email: cgi@coastalgulf.com

C&C Global, Inc. (Sales Only)
26 Treescape Circle
The Woodlands, Texas 77381-4058
Phone: 281-296-9800
Fax: 281-296-9898
E-mail: sales@ccglobalinc.com

Ed Martin & Assoc. (Sales & Service)
2212 Teague Rd.
Houston, Texas 77080
Phone: 713-895-8188
Fax: 713-895-8788
E-mail: sales@emaa.com

Soni Mega Tech, Inc. (Sales & Service)
Account: 3230 River Birch Dr.
Pearland, Texas 77584 Office: 9001 Frey Rd., Suite A Houston, Texas 77034
Phone, office: 713-528-1312
Phone, cell: 832-439-7322
Fax: 281-974-4758
E-mail: soni@sonimegatech.com

Frontline Sensors & Systems, Inc.
A subsidiary of Wilmington Instruments
332 N. Fries Avenue
Wilmington, CA 90744
Phone: 310-834-1133 | 800-324-4935
E-mail: sales@calcert.com

Equipco Sales
2100 Meridian Park Boulevard
Concord, CA 94520
Phone: 888-234-5678
Fax: 925-305-1300
E-mail: Sales@2345678.com

Hydraulic & Automation Controls Inc. (Service only)
2699 E. 28th St., #417
Signal Hill, CA, 90755
Phone: 562-981-2266
Fax: 562-981-3144

Red Sky Marine
218 Main Street
Suite 267
Kirkland, WA, 98033
Phone: 425-429-0142
E-mail: sean@redskymarine.com

Canada

R.A. Kirby Sales, Inc. (Sales & Service)
19 - 13085 Yonge St., Suite 407
Richmond Hill, ON L4E 0K2
Phone: 905-738-6225
Fax: 905-738-4355
E-mail: sales@kirbysales.com

Caribbean

Sersinca Curazao, B.V
Kaya Angel J. Leñez 4908A
Industriepark Seru Lora-Curazao
Phone: +5999-7884810
E-mail: sales@sersincacur.com

South America

Signal S.A. (Sales)
Dr. H.Sande 726
Avellaneda (b1873byn)
Buenos Aries, Argentina
Tel/Fax: (5411)4204-2001/2002
E-mail: signals@infovia.com.ar and signal-comercial@netizen.com.ar
Web Site: www.signalsa.com.ar
E-mail, Bahia Blanca branch: md@netizen.com.ar and
signalbahia@speedy.com.ar

Solas Representações (Sales)
Rua Dom Bosco, 54
Santa Rosa, niteroi, RJ, Brazil
CEP: 24.220-390
Att: Edson Olivares
Phone: +55.21.3701.1960
Fax: +55.21.3701.1961
E-mail: solas@solas.com.br
Web Site: www.solas.com.br

Sersinca
C/San Rafael entre Av. Ollaarvides y
C/General Riera. Puerta Maraven
Punto Fijo - Edo. Falcon. Venezuela
Phone: +58 269 2472927;2443095
E-mail: asesor@sersinca.com

Europe

MMC (EUROPE) Ltd.
South Nelson Road
South Nelson Industrial Estate
Cramlington
Northumberland
NE23 9WF
United Kingdom
Tel: +44.1670.738111
Fax: +44.1670.738789
E-m: info@mmc-europe.co.uk

SGS Nederland B.V.
Malledijk 18M
3208 LA - Spijkenisse
Nederland
Contact: Don Hill
Tel : +31-181-693491
Fax: +31-181-693558
Cell: +31-6-12997586
E-mail: don.hill@sgs.com

Intertek Caleb Brett France
3 Rue Alessandro Volta
13500 MARTIGUES
France
Contact: Pierre Merle
Tel: +33 4 42 35 47 12
Fax: +33 4 42 81 83 08
E-mail: MartiguesMaintenance@Intertek.com

Hartwig Instruments
Pottebakkerstraat 15
3194 AD Rotterdam-Hoogvliet
Netherlands
Contact: Pieter van der Jagt
Tel: +31 10-438-5286
Fax: +31 10-438-2099
E-mail: pieter@hartwig.nl

Zervoudakis Marine Supplies Ltd.
31 Milou Street
GR-185 45 PIRAEUS
Greece
Contact: John Zervoudakis
Tel: +30 210 4623700
Fax: +30 210 4627900
E-mail: zerv@otenet.gr

Cross Technical Services Limited
2 Afendouli Street
18536 PIRAEUS
Greece
Contact: Fotini Geranou
Tel: +30 210 4180670
Fax: +30 210 418 3472
E-mail: Fotini.geranou@cross.com.gr

Uniservice Germany GMBH
Normannenweg 39
20537 HAMBURG
Germany
Contact: Christopher Cappelen
Tel: +49 40 756 0250
Fax: +49 40 753 5991
E-mail: info@uniservice.de

Pe-Gu Maritime, Ltd.
Postane Mh. Erikli Sk. No:7
34940 TUZLA
Istanbul
Turkey
Contact: Cihangir Kupeli
Tel: +90 216 518 18 18
Fax: +90 216 447 50 07
E-mail: info@pe-gu.com

Technoimpex Engineering UK, Ltd.
1a, 2nd Obydenskiy Lane
MOSCOW, 119034
Russia
Contact: Marina Savkina
Tel.: +7495 637 14 44
Fax.:+7 495 637 13 33
E-mail: info-ru@technoimpex.co.uk

Gas Marine Technologies
Gibraltar
Contact: Mariana Dimova
Tel.+34 956 653 520
Fax +34 956 630 595
E-mail: op@gasmarine.es

Philippines

Goldrenz Industrial Sales Corporation
3454 West Vigan Street
Sampaloc Manila 1008
Philippines
Phone: 63-2-713-1115/63-2-715-7535
Fax: 63-2-713-9056
E-mail 1: sales@goldrenz.com
E-mail 2: edgardeguzman@goldrenz.com

Japan Korea

MMC (Asia) Ltd. (Asian Affiliate Office)
7-7, 2 Chome, Kotonoo-Cho, Chuo-Ku, Kobe 651
Phone: 078-2510061
Fax: 078-2520265
E-mail: info@mmcasia.co.jp

Singapore

Bond Instrumentation [S] Pte, Ltd.
8 Gul Street 3, Singapore 629265
Phone: (65) 68651800
Fax: (65) 68624062
E-mail: bondsales@bond.com.sg

China

Shanghai Know How Marine Equipment Ltd.
Tel: 0086 21 64045956
Fax: 0086 21 64166108
E-mail: shanghai@khmarine.com
Manager: Mr. Michael Zhang
> Dalian office:
Tel: 0086 411 82690870
Fax: 0086 411 82658760
E-mail: dalian@khmarine.com
Manger: Mr. Jack Liu
> Wuhan Office
Tel: +86 27 5970 6289
Fax: +86 27 5970 6248
E-mail: wuhan@khmarine.com
Manager: Mr. Honis Bao

Vietnam, Laos, Cambodia

Orient Technical Marine Company Ltd.
A14, Tan Thuan Nam Project, Area No. 2
Phu Thuan Ward, Dist No 7
Ho Chi Minh City
Vietnam
Tel: (84.8) 38731906/05
Fax: (84.8) 38731904
orientmarine@hcm.fpt.vn

India

Smec Automation Pvt Ltd
2nd Floor, Kaloor Bus Stand Complex
Ernakulam
Kerala 682017
INDIA
Contact: Mr R. Chandran
Tel: +91.484.2340904
Fax: +91.484.2340906
E-mail: sales@smec.in or service@smec.in

Australia

P.C. Maxwell & Associates
51 Yerrin Street
Balwyn, VIC, 3101
Australia
Phone: +61398365009
Fax: +61398360583
E-mail: p.c.maxwell@bigpond.com

Middle Eastern Sales & Service

Wärtsilä United Arab Emirates
P.O. Box 61494
DIP Plot 597-572
Dubai Investment Park
Dubai, United Arab Emirates
Phone: +9714 885 7022
Fax: +9714 885 7020
Mobile: +97150 459 8231
Email: automation.dubai@wartsila.com, shaju.john@wartsila.com
Contact: Shaju John Ninan

Haven Instrumentation LLC
P.O. Box 51793
Dubai, U.A.E.
Phone: 971.4.381105
Fax: 971.4.385815
Contact: Ian Hughes

Metro Mac Trading L.L.C.
P.O. Box 13485
Shed No DY 62 Al Jadaf Port Yard
Al Jadaf
DUBAI
United Arab Emirates
Contact: Sajith / Lijesh
Tel: +971-4-3247777 / +971-50-5538020
Fax: +971-4-3241048
E-mail: info@metromac.com

Please note, repairs carried out in any unauthorized repair facility will automatically void the guarantee. These repair procedures are in accordance with approval agency directions for intrinsically safe devices.

For addition, service centers in your area, please see our website at <http://www.mmcintl.com>

SECTION XV

REPLACEMENT PARTS LIST

<u>ITEM</u>	<u>DESCRIPTION</u>	<u>PART NUMBER</u>
1.	SAMPLING TAPE 100FT/40M WITH SNAPHOOK	TAP40M(100FT)-W-HOOK-C
2.	1/3 LITER ZONE SAMPLER, STAINLESS STEEL	A-2518-3-14/3-LTR
3.	1/2 LITER ZONE SAMPLER STAINLESS STEEL	A-2518-1-1/2-LTR
4.	PRIMARY VIEW ASSEMBLY	DWG. A-2562-146-SG-PRIM*
5.	WIPER ASSEMBLY COMPLETE	B-2562-26-WPR-ASSY
6.	WIPER ASSEMBLY GASKET(BUNA-N)	A-2562-90-WPR-GDKT
7.	GASKET, REEL HOUSING COVER(BUNA-N)	B-2562-322-BN-SML
8.	COVER SCREWS, "O" RING SEALED	
9.	SAMPLE COLLECTION VALVE	A-2518-55V
10.	GROUNDING CABLE ASSEMBLY	B-2562-72A
11.	1/2 FILLING ATTACHMENT ASSEMBLY	DWG. B-2562-185-BTL-FL*
12.	PUSH BUTTON ACTUATOR ,NYLON	A-25262-134
13.	"O" RING, STUB BARREL COUPLING END	

* Order by Drawing Part Number, included in this manual

SECTION XVI

LIST OF DRAWING

<u>DRAWING NUMBER</u>	<u>REVISION</u>	<u>DESCRIPTION</u>
FIG 1 (CLOSAD44.SKD)	-	BASIC OPERATING PROCEDURE (PICTORIAL PROCESS DIAGRAM)
D-2562-328	-	Closed Sampling Systems Tape Reel Housing Interior view
B-2562-182-406-PET	-	1/2 Liter Portable Sampling System Gas Tight for Closed System Applications. (Petroleum)
B-2562-171	F	Barrel Attachment for 1/3 & 1/2 Liter Closed Sampling System and Tank Dryness Checking
S-2562-1SM	D	MMC Closed Sampling Universal Tape Reel Housing & Stub Barrel Adapter For use With Self-Contained MMC Sampling Vapor Valves
A-2562-146	B	Primary Sight Glass Assembly
B-2562-185	K	Assembly 1/3 and 1/2 Liter Sampling, Sampling Bottle Filling Attachment.
A-2562-190	C	MMC Closed Sampling Barrel to "TS" Valve Short Coupling Adaptor.
A-2562-372	B	MMC Closed Sampling Barrel to "TT Valve Short Coupling Adaptor
A-2518-1	-	1/2 Liter Zone Sampler Assembly
B-2562-72	A	Grounding cable with ground clamp for all Portable Cargo Gauging and Sampling tapes
A-2318-55V	-	Portable Sample Collection Assembly Vapor Valve
B-2562-238	A	Vapor Return Hose

SECTION XVII

17.0 ADDENDUM FOR DRYNESS CHECKING ACCESSORIES

LIST OF DRAWINGS

DRAWING NUMBER	REV.	DESCRIPTION
A-2670-1	-	Outline Drawing Standard sounding Bob (Brass)
A-2670-2	D	Sounding Bob Stainless Steel(24mm)

MMC CLOSED GAS TIGHT SAMPLING SYSTEM

CLOSED (GAS-TIGHT) 1/3 AND 1/2 LITER SAMPLING.

BASIC OPERATING PROCEDURE

(FOR USE WITH ANY 2" MMC VAPOR CONTROL VALVE.)

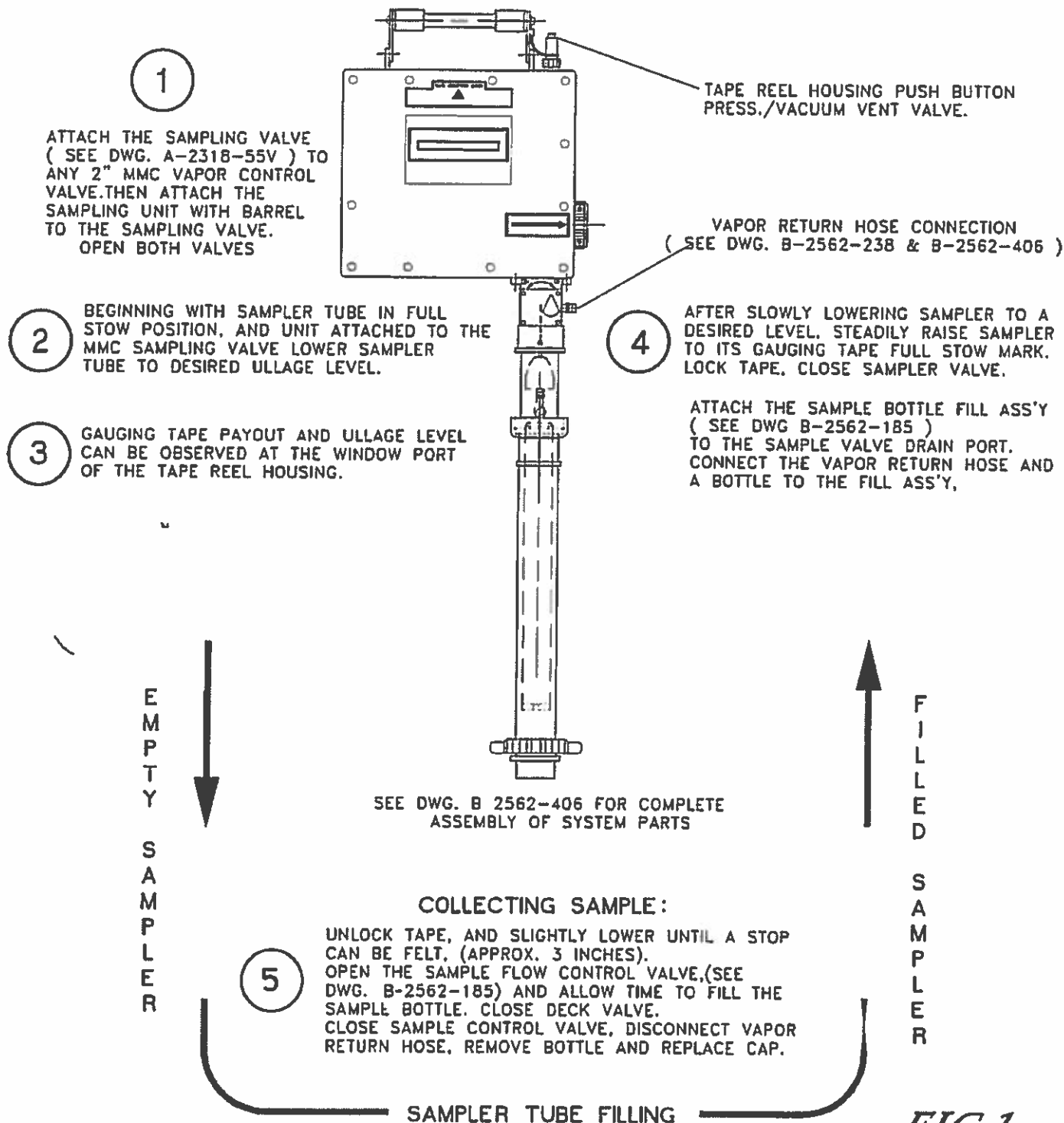
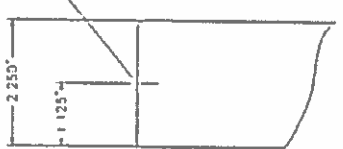
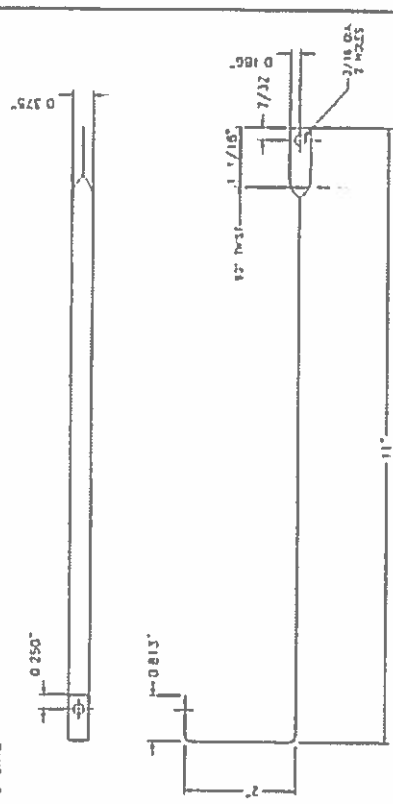


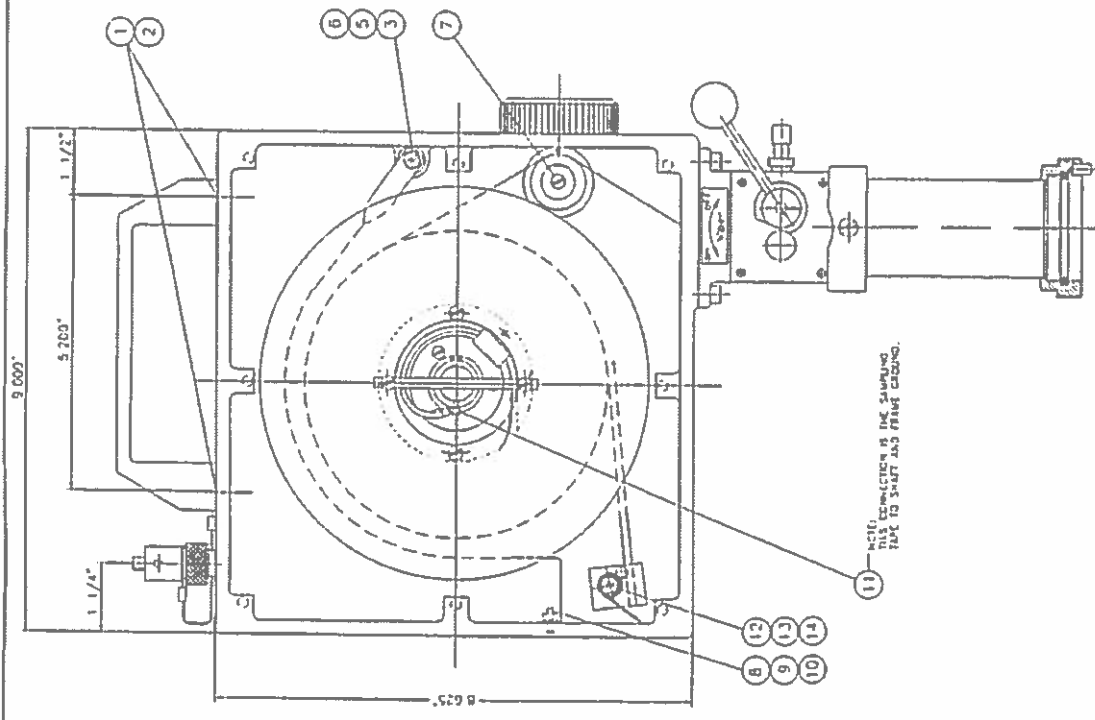
FIG.1



HANDLE & P/V VALVE CENTERLINE



5
DETAIL PART # 5
FULL SCALE



NO.	DESCRIPTION	QTY	UNIT
1	SPRING TORQUE PART #218-182-750	1	SIN ST
2	SCREW TORQUE #113-75	1	SIN ST
3	POST SCW A-282-152	1	SIN ST
4	SCREW TORQUE #338-378/C	1	SIN ST
5	WASHER TORQUE #338-378/C	1	SIN ST
6	WASHER TORQUE #338-378/C	1	SIN ST
7	SCREW TORQUE #338-378/C	1	SIN ST
8	SCREW TORQUE #338-378/C	1	SIN ST
9	SCREW TORQUE #338-378/C	1	SIN ST
10	SCREW TORQUE #338-378/C	1	SIN ST
11	SCREW TORQUE #338-378/C	1	SIN ST
12	SCREW TORQUE #338-378/C	1	SIN ST
13	SCREW TORQUE #338-378/C	1	SIN ST
14	SCREW TORQUE #338-378/C	1	SIN ST

153 OF MATERIAL

MAC CLOSED SAMPLING UNIVERSAL TAP
 FEEL WORKING WITH MOTOR
 INTERNAL VIEW FOR USE WITH
 FIXED-IN-PLACE & SELF CONTAINED
 LMAC SAMPLING VAPOR VALVES

REV ASSY
 SMALL SAMPLING CASE
 DWG. S-2582-150

USED ON THE LEFT

MAC CLOSED SAMPLING UNIVERSAL TAP
 FEEL WORKING WITH MOTOR
 INTERNAL VIEW FOR USE WITH
 FIXED-IN-PLACE & SELF CONTAINED
 LMAC SAMPLING VAPOR VALVES

REV ASSY
 SMALL SAMPLING CASE
 DWG. S-2582-150

REV ASSY
 SMALL SAMPLING CASE
 DWG. S-2582-150

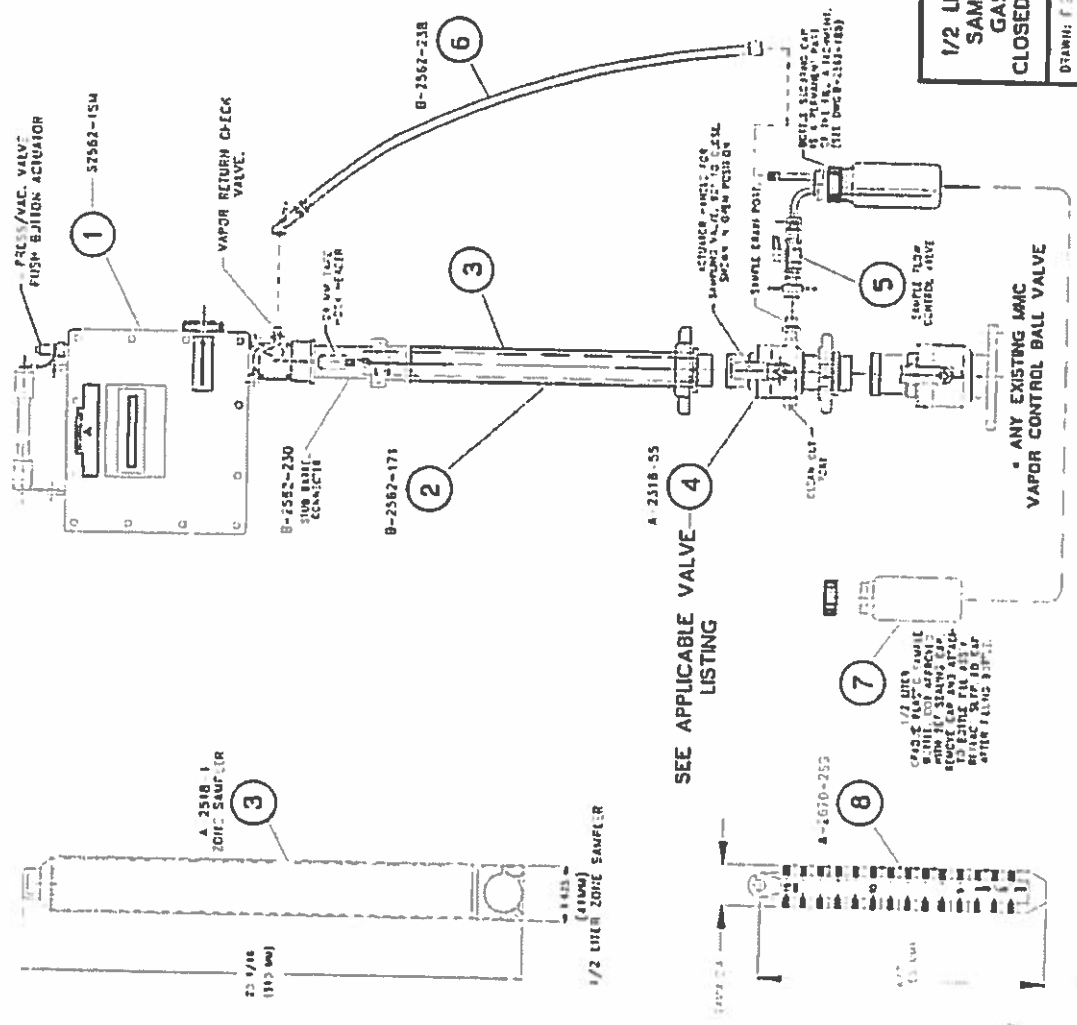
1/2 LITER ZONE SAMPLER
 4875 1/2 LITER ZONE SAMPLER
 1/2 LITER ZONE SAMPLER

- ### BASIC SYSTEM COMPONENTS (PETROLEUM SERVICE)
1. CLOSED SAMPLING TAPE, 40 METER LGT
 2. SAMPLER BARREL
 3. 1/2 LITER ALL STN STL ZONE SAMPLER
 4. SAMPLE COLLECTION DIVERTER VALVE
(SEE APPLICABLE VALVE LISTING)
 5. SAMPLE BOTTLE FILL ATTACHMENT
PT# BTLFL-B-2562-185
 6. VAPOR RETURN HOSE ASSY
 7. SAMPLE BOTTLE, 1 SUPPLIED
 8. 24MM DIA. STAINLESS STEEL INNAE
BOB. 150MM SCALE. A-2670-255

INSTRUCTION MANUAL PACKED WITH PT #1 CARRYING CASE

APPLICABLE VALVE LIST

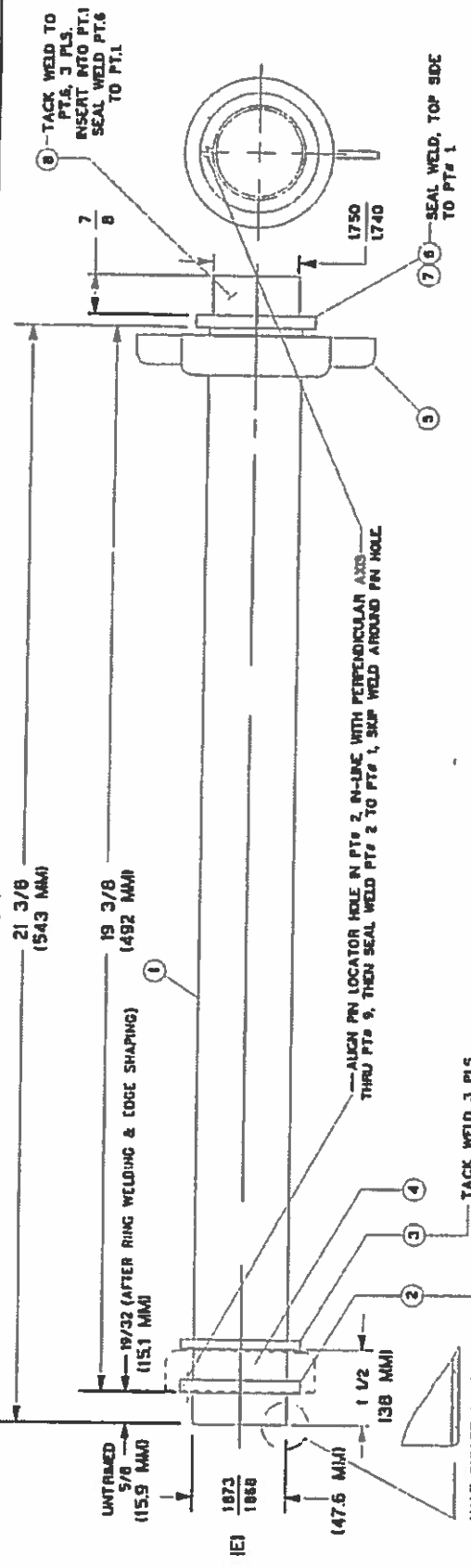
- (MMC TYPE) (OTHERS VALVE TYPES)
 B. NB, F50, C50 'TS' WITH ADAPTOR
 MJ360, SD1 PT# S2562TS-CPL-SHT
 W/O ADAPTOR.



1/2 LITER PORTABLE SAMPLING SYSTEM GAS TIGHT FOR CLOSED SYSTEMS APPL.		PETROLEUM SERVICE SAMPLING SYSTEM	
DATE: 09/26/17		MMC INTERNATIONAL	
APP D. DATE		CORP.	
DWG. NO.		INWOOD, NEW YORK	
REV		B2562-406-PET	

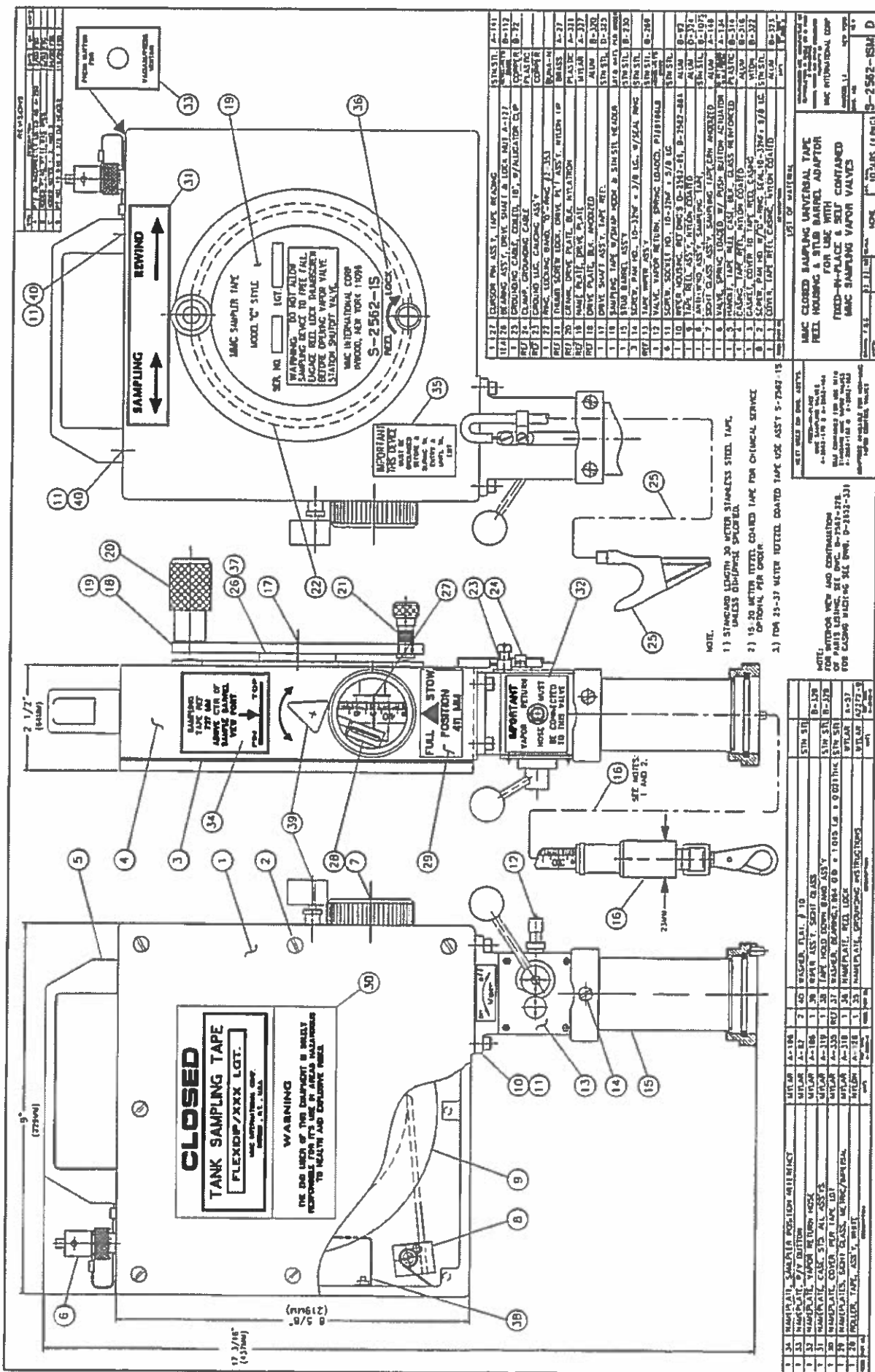
UNAUTHORIZED USE, MANUFACTURE OR REPRODUCTION OF THIS DRAWING IS EXPRESSLY PROHIBITED.

REVISIONS		
SYM	DESCRIPTION	DATE
B	DWG. UPDATE	12/94
C	PT.5 WAS -13C	2/95
D	DIM WAS 21 3/4	04/96
E	DWG UPDATE PER B2562-338, LESS SIGHT GLASS ASSY	5/06
F	PT.5 WAS 22E3-13C	9/17



NO	PT. NO.	DESCRIPTION	UNIT
1	B	ALIGNMENT COLLAR, 1 3/4 O.D., 0.049 WALL, 1 1/2 LG.	STN. STL.
1	7	SOR. RING, SEAL, 15-226	BUMS-IN
1	6	RING, BARREL STOP, A-2582-227	STN. STL.
1	5	COUPLING COLLAR, A-2283-150	STN. STL.
REF	4	COUPLING COLLAR, A-2283-138	BRONZE
REF	3	RING, COLLAR STOP/TUBE, A-2362-232	STN. STL.
REF	2	ALIGNMENT RING, A-2582-231	STN. STL.
1	1	TUBE, SAMPLER BARREL, B-2502-234	STN. STL.

DIMENSIONAL TOLERANCE		TITLE	
FRACTION	ANGLE	TITLE	
1/16	1/16	TITLE	
1/32	1/32	TITLE	
1/64	1/64	TITLE	
1/128	1/128	TITLE	
1/256	1/256	TITLE	
1/512	1/512	TITLE	
1/1024	1/1024	TITLE	
1/2048	1/2048	TITLE	
1/4096	1/4096	TITLE	
1/8192	1/8192	TITLE	
1/16384	1/16384	TITLE	
1/32768	1/32768	TITLE	
1/65536	1/65536	TITLE	
1/131072	1/131072	TITLE	
1/262144	1/262144	TITLE	
1/524288	1/524288	TITLE	
1/1048576	1/1048576	TITLE	
1/2097152	1/2097152	TITLE	
1/4194304	1/4194304	TITLE	
1/8388608	1/8388608	TITLE	
1/16777216	1/16777216	TITLE	
1/33554432	1/33554432	TITLE	
1/67108864	1/67108864	TITLE	
1/134217728	1/134217728	TITLE	
1/268435456	1/268435456	TITLE	
1/536870912	1/536870912	TITLE	
1/1073741824	1/1073741824	TITLE	
1/2147483648	1/2147483648	TITLE	
1/4294967296	1/4294967296	TITLE	
1/8589934592	1/8589934592	TITLE	
1/17179869184	1/17179869184	TITLE	
1/34359738368	1/34359738368	TITLE	
1/68719476736	1/68719476736	TITLE	
1/137438953472	1/137438953472	TITLE	
1/274877906944	1/274877906944	TITLE	
1/549755813888	1/549755813888	TITLE	
1/1099511627776	1/1099511627776	TITLE	
1/2199023255552	1/2199023255552	TITLE	
1/4398046511104	1/4398046511104	TITLE	
1/8796093022208	1/8796093022208	TITLE	
1/1759218044416	1/1759218044416	TITLE	
1/3518436088832	1/3518436088832	TITLE	
1/7036872177664	1/7036872177664	TITLE	
1/14073744355328	1/14073744355328	TITLE	
1/28147488710656	1/28147488710656	TITLE	
1/56294977421312	1/56294977421312	TITLE	
1/112589954842624	1/112589954842624	TITLE	
1/225179909685248	1/225179909685248	TITLE	
1/450359819370496	1/450359819370496	TITLE	
1/900719638740992	1/900719638740992	TITLE	
1/1801439277481984	1/1801439277481984	TITLE	
1/3602878554963968	1/3602878554963968	TITLE	
1/7205757109927936	1/7205757109927936	TITLE	
1/14411514219855872	1/14411514219855872	TITLE	
1/28823028439711744	1/28823028439711744	TITLE	
1/57646056879423488	1/57646056879423488	TITLE	
1/115292113758846976	1/115292113758846976	TITLE	
1/230584227517693952	1/230584227517693952	TITLE	
1/461168455035387904	1/461168455035387904	TITLE	
1/922336910070775808	1/922336910070775808	TITLE	
1/1844673820141551616	1/1844673820141551616	TITLE	
1/3689347640283103232	1/3689347640283103232	TITLE	
1/7378695280566206464	1/7378695280566206464	TITLE	
1/1475739056113324928	1/1475739056113324928	TITLE	
1/2951478112266649756	1/2951478112266649756	TITLE	
1/5902956224533299512	1/5902956224533299512	TITLE	
1/11805912449066599024	1/11805912449066599024	TITLE	
1/23611824898133198048	1/23611824898133198048	TITLE	
1/47223649796266396096	1/47223649796266396096	TITLE	
1/94447299592532792192	1/94447299592532792192	TITLE	
1/188894591165065484384	1/188894591165065484384	TITLE	
1/377789182330130968768	1/377789182330130968768	TITLE	
1/755578364660261937536	1/755578364660261937536	TITLE	
1/151115672932052385072	1/151115672932052385072	TITLE	
1/302231345864104770144	1/302231345864104770144	TITLE	
1/604462691728209540288	1/604462691728209540288	TITLE	
1/120892538345641908576	1/120892538345641908576	TITLE	
1/241785076691283817152	1/241785076691283817152	TITLE	
1/483570153382567634304	1/483570153382567634304	TITLE	
1/967140306765135268608	1/967140306765135268608	TITLE	
1/193428071330270537216	1/193428071330270537216	TITLE	
1/386856142660541074432	1/386856142660541074432	TITLE	
1/773712285321082148864	1/773712285321082148864	TITLE	
1/154742457044216437728	1/154742457044216437728	TITLE	
1/309484914088432875456	1/309484914088432875456	TITLE	
1/618969828176865750912	1/618969828176865750912	TITLE	
1/1237939656353731501824	1/1237939656353731501824	TITLE	
1/2475879312707463003648	1/2475879312707463003648	TITLE	
1/4951758625414926007296	1/4951758625414926007296	TITLE	
1/9903517250829852014592	1/9903517250829852014592	TITLE	
1/19807034516459704029184	1/19807034516459704029184	TITLE	
1/39614069032919408058368	1/39614069032919408058368	TITLE	
1/79228138065838816116736	1/79228138065838816116736	TITLE	
1/15845627613167763223352	1/15845627613167763223352	TITLE	
1/31691255226335526446704	1/31691255226335526446704	TITLE	
1/63382510452671052893488	1/63382510452671052893488	TITLE	
1/126765020905342105786896	1/126765020905342105786896	TITLE	
1/253530041810684211573792	1/253530041810684211573792	TITLE	
1/5070600836213684231467584	1/5070600836213684231467584	TITLE	
1/101412016724273724621536	1/101412016724273724621536	TITLE	
1/20282403344854744924272	1/20282403344854744924272	TITLE	
1/40564806689709489848544	1/40564806689709489848544	TITLE	
1/81129613379418979697088	1/81129613379418979697088	TITLE	
1/162259227588837959394176	1/162259227588837959394176	TITLE	
1/324518455177675918788352	1/324518455177675918788352	TITLE	
1/649036910355351837576704	1/649036910355351837576704	TITLE	
1/1298073820710716751513408	1/1298073820710716751513408	TITLE	
1/2596147641421433503026816	1/2596147641421433503026816	TITLE	
1/5192295282842867006053632	1/5192295282842867006053632	TITLE	
1/10384590566885734122107264	1/10384590566885734122107264	TITLE	
1/20769181133771468244214528	1/20769181133771468244214528	TITLE	
1/4153836226754293648842856	1/4153836226754293648842856	TITLE	
1/8307672453508587297685712	1/8307672453508587297685712	TITLE	
1/16615344907017174593771424	1/16615344907017174593771424	TITLE	
1/33230689814034349187542464	1/33230689814034349187542464	TITLE	
1/66461379628068698375084928	1/66461379628068698375084928	TITLE	
1/13292275925613739675016976	1/13292275925613739675016976	TITLE	
1/26584551851227479350033952	1/26584551851227479350033952	TITLE	
1/53169103702454958700067904	1/53169103702454958700067904	TITLE	
1/106338207404909917400135808	1/106338207404909917400135808	TITLE	
1/212676414809819834800271616	1/212676414809819834800271616	TITLE	
1/425352829619639669600543328	1/425352829619639669600543328	TITLE	
1/850705659239279339200108656	1/850705659239279339200108656	TITLE	
1/170141131847855867600217312	1/170141131847855867600217312	TITLE	
1/340282263695711735200434624	1/340282263695711735200434624	TITLE	
1/680564527391423470400869248	1/680564527391423470400869248	TITLE	
1/1361129054782846940801738496	1/1361129054782846940801738496	TITLE	
1/2722258109565693881603476992	1/2722258109565693881603476992	TITLE	
1/5444516219131387763206953984	1/5444516219131387763206953984	TITLE	
1/10889032438262775464013907968	1/10889032438262775464013907968	TITLE	
1/21778064876525550928027815936	1/21778064876525550928027815936	TITLE	
1/43556129753051101856055631872	1/43556129753051101856055631872	TITLE	
1/87112259506102203712011127744	1/87112259506102203712011127744	TITLE	
1/17422451901220447424022255488	1/17422451901220447424022255488	TITLE	
1/3484490380244089484804451136	1/3484490380244089484804451136	TITLE	
1/6968980760488178969608902272	1/6968980760488178969608902272	TITLE	
1/13937961520977379392017804544	1/13937961520977379392017804544	TITLE	
1/27875923041954758784035609088	1/27875923041954758784035609088	TITLE	
1/55751846083909517568071218176	1/55751846083909517568071218176	TITLE	
1/111503692167819035136014236352	1/111503692167819035136014236352	TITLE	
1/223007384335638070272028472704	1/223007384335638070272028472704	TITLE	
1/446014768671276140544056945408	1/446014768671276140544056945408	TITLE	
1/892029537342552281088011380816	1/892029537342552281088011380816	TITLE	
1/17840590748450456221760226163328	1/17840590748450456221760226163328	TITLE	
1/35681181496900912443520452326656	1/35681181496900912443520452326656	TITLE	
1/71362362993801824870409045453312	1/71362362993801824870409045453312	TITLE	
1/142724725977603649740818090886624	1/142724725977603649740818090886624	TITLE	
1/28544945195520729948163618177328	1/28544945195520729948163618177328	TITLE	
1/57089890391041459896327236354656	1/57089890391041459896327236354656	TITLE	
1/11417978078208291979265446269312	1/11417978078208291979265446269312	TITLE	
1/22835956156416583958530892538624	1/22835956156416583958530892538624	TITLE	
1/45671912312833167917061785077248	1/45671912312833167917061785077248	TITLE	
1/9134382462566633583412357114496	1/9134382462566633583412357114496	TITLE	
1/182687649253332671682467422828992	1/182687649253332671682467422828992	TITLE	
1/3653752985066653433649348456			



REVISIONS

NO.	DATE	DESCRIPTION
1	11/15/64	REVISED TO SHOW 1/2" DIA. HOLES
2	11/15/64	REVISED TO SHOW 1/2" DIA. HOLES
3	11/15/64	REVISED TO SHOW 1/2" DIA. HOLES

1 22	EXPOSURE POK ASSY. TAPE READING	57H STL	A-191
1 23	DRIVING ASSY. DRIVE SHAFT & LOCK W/ALICATOR QIP	57H STL	A-192
1 24	DRIVING CABLE, COILED 10', W/ALICATOR QIP	COMP	B-72
1 25	DRIVING CABLE, COILED 10', W/ALICATOR QIP	COMP	B-72
1 26	GROUND TIE, GALVASSY	BRASS	A-27
1 27	GROUND TIE, GALVASSY	BRASS	A-27
1 28	GROUND TIE, GALVASSY	BRASS	A-27
1 29	GROUND TIE, GALVASSY	BRASS	A-27
1 30	GROUND TIE, GALVASSY	BRASS	A-27
1 31	GROUND TIE, GALVASSY	BRASS	A-27
1 32	GROUND TIE, GALVASSY	BRASS	A-27
1 33	GROUND TIE, GALVASSY	BRASS	A-27
1 34	GROUND TIE, GALVASSY	BRASS	A-27
1 35	GROUND TIE, GALVASSY	BRASS	A-27
1 36	GROUND TIE, GALVASSY	BRASS	A-27
1 37	GROUND TIE, GALVASSY	BRASS	A-27
1 38	GROUND TIE, GALVASSY	BRASS	A-27
1 39	GROUND TIE, GALVASSY	BRASS	A-27
1 40	GROUND TIE, GALVASSY	BRASS	A-27

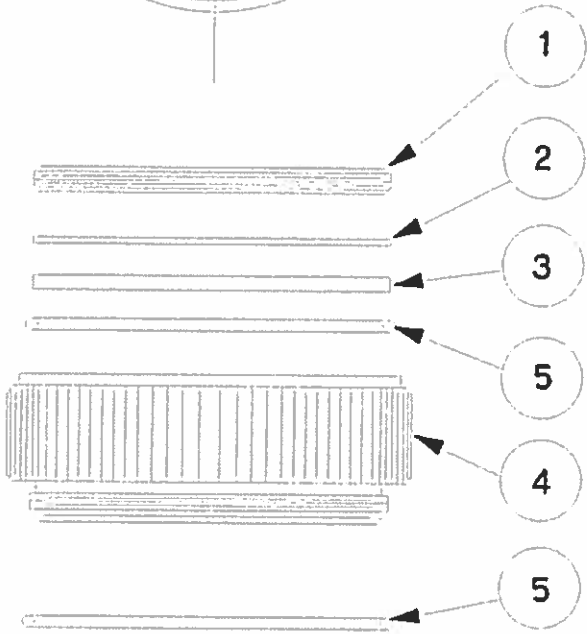
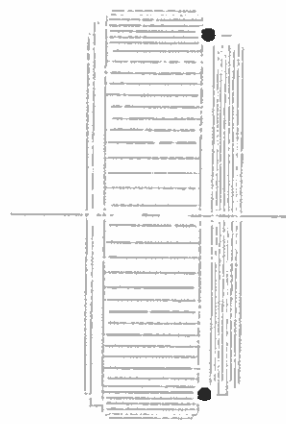
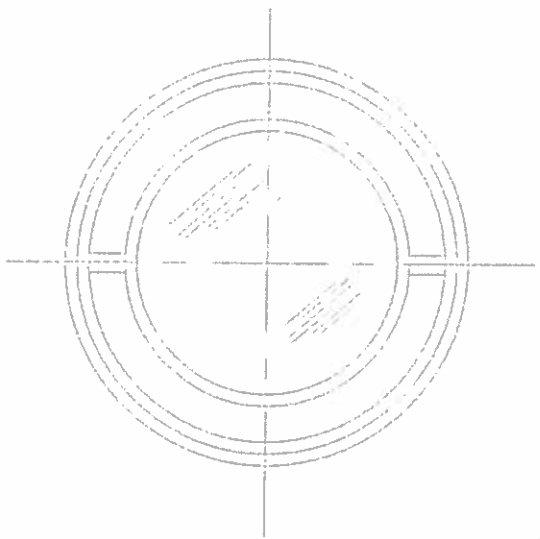
1 41	GROUND TIE, GALVASSY	BRASS	A-27
1 42	GROUND TIE, GALVASSY	BRASS	A-27
1 43	GROUND TIE, GALVASSY	BRASS	A-27
1 44	GROUND TIE, GALVASSY	BRASS	A-27
1 45	GROUND TIE, GALVASSY	BRASS	A-27
1 46	GROUND TIE, GALVASSY	BRASS	A-27
1 47	GROUND TIE, GALVASSY	BRASS	A-27
1 48	GROUND TIE, GALVASSY	BRASS	A-27
1 49	GROUND TIE, GALVASSY	BRASS	A-27
1 50	GROUND TIE, GALVASSY	BRASS	A-27

NOTE: 1) STAINLESS LENGTH 30 METER STAINLESS STEEL TAPE. UNLESS OTHERWISE SPECIFIED.
2) 15-20 METER METAL COATED TAPE FOR CHEMICAL SERVICE. OPTIONAL PER ORDER.
3) FOR 22-27 METER METAL COATED TAPE USE ASST 9-2562-15

1 51	GROUND TIE, GALVASSY	BRASS	A-27
1 52	GROUND TIE, GALVASSY	BRASS	A-27
1 53	GROUND TIE, GALVASSY	BRASS	A-27
1 54	GROUND TIE, GALVASSY	BRASS	A-27
1 55	GROUND TIE, GALVASSY	BRASS	A-27
1 56	GROUND TIE, GALVASSY	BRASS	A-27
1 57	GROUND TIE, GALVASSY	BRASS	A-27
1 58	GROUND TIE, GALVASSY	BRASS	A-27
1 59	GROUND TIE, GALVASSY	BRASS	A-27
1 60	GROUND TIE, GALVASSY	BRASS	A-27

1 61	GROUND TIE, GALVASSY	BRASS	A-27
1 62	GROUND TIE, GALVASSY	BRASS	A-27
1 63	GROUND TIE, GALVASSY	BRASS	A-27
1 64	GROUND TIE, GALVASSY	BRASS	A-27
1 65	GROUND TIE, GALVASSY	BRASS	A-27
1 66	GROUND TIE, GALVASSY	BRASS	A-27
1 67	GROUND TIE, GALVASSY	BRASS	A-27
1 68	GROUND TIE, GALVASSY	BRASS	A-27
1 69	GROUND TIE, GALVASSY	BRASS	A-27
1 70	GROUND TIE, GALVASSY	BRASS	A-27

UNAUTHORIZED USE, MANUFACTURE OR REPRODUCTION OF THIS DRAWING IS STRICTLY PROHIBITED



REQ	ITEM	DESCRIPTION
2	5	"O" RING, 2-129, VITON
1	4	BODY, SIGHT GLASS ASS'Y
1	3	SIGHT GLASS, TEMPERED
1	2	NYLON WASHER
1	1	RETAINING RING, THREADED

REV.B PT# 5 WAS BUNA-N . 10-3-14
 REV.A REVERSED LISTING ORDER OF PT'S 4&5.9/98

NEXT ASS'Y D-2562-117 JOB NUM
 MACHINING DETAILS B-2562-172

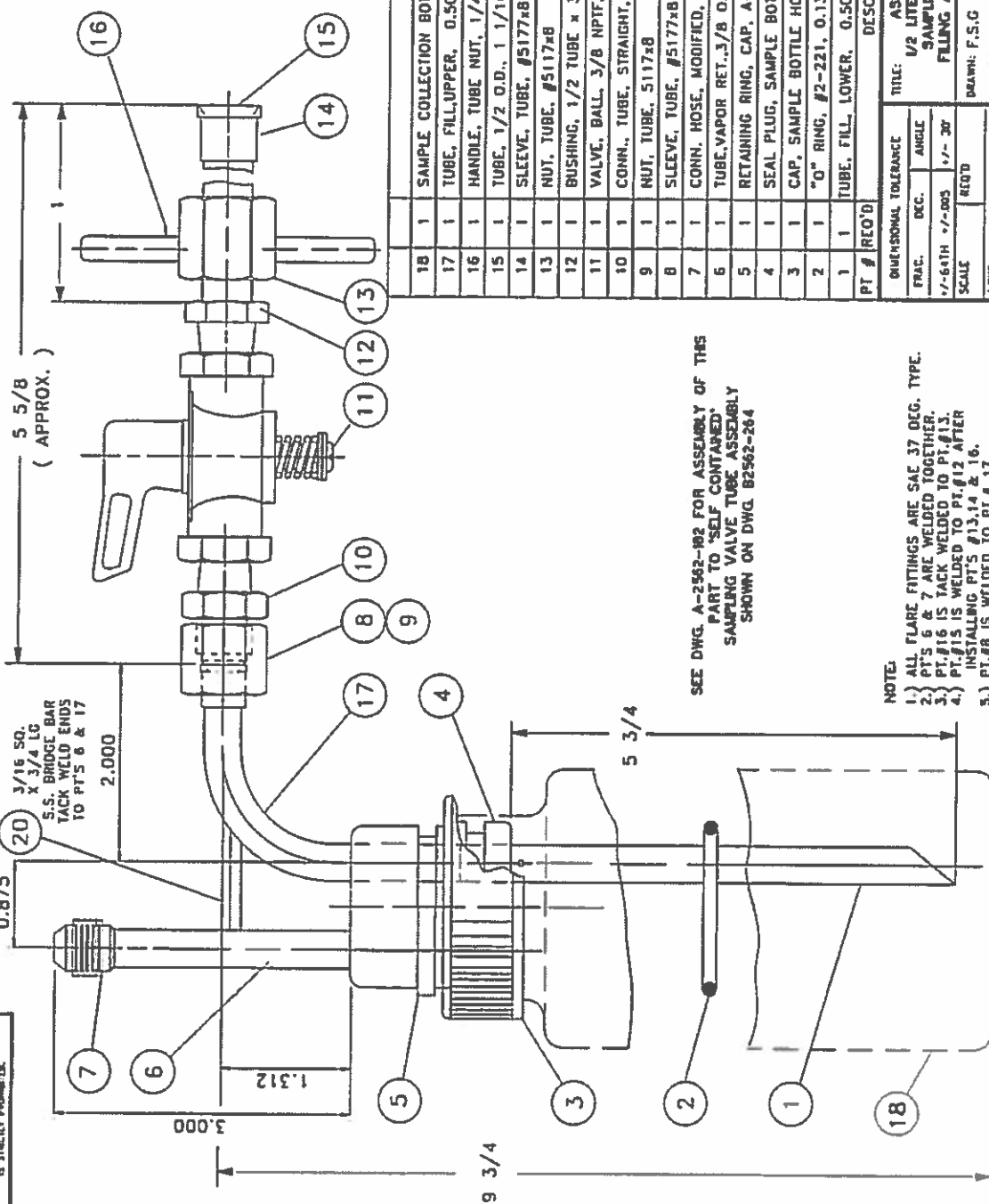
MMC INTERNATIONAL CORP.
 INWOOD NEW YORK 11696
 DRN BY F S G
 DATE 5/92

**PRIMARY
 SIGHT GLASS ASSEMBLY**

CLOSED HAND GAUGING

APP'D	DWG. NO. A-2562-146	PCV B
-------	-------------------------------	-----------------

UNMANUFACTURED USE. MANUFACTURE OF REPRODUCTION IS UNLAWFUL OR IN VIOLATION OF PATENT RIGHTS.



SEE DWG. A-2562-102 FOR ASSEMBLY OF THIS PART TO "SELF CONTAINED" SAMPLING VALVE TUBE ASSEMBLY SHOWN ON DWG. B2562-204

NOTE:
 1.) ALL FLARE FITTINGS ARE SAE 37 DEG. TYPE.
 2.) PT'S 6 & 7 ARE WELDED TOGETHER.
 3.) PT.#16 IS TACK WELDED TO PT.#13.
 4.) PT.#15 IS WELDED TO PT.#12 AFTER INSTALLING PT'S #13,14 & 16.
 5.) PT.#8 IS WELDED TO PT.# 17.

REVISIONS		
SYM	DESCRIPTION	DATE
C	DRAWING PRODUCTION UPDATE	11/94
D	PARTS LIST UP-DATE	12/94
E	PARTS LIST UP-DATE	02/96
F	PARTS LIST UP-DATE	03/97
G	PARTS LIST UP-DATE	05/97
H	ADD'D MAT'L ID. TO PT.#11, & STYLE NOTE	03/00
J	ADD MISSING PT#19/20/09/05	
K	DELETED PT.19	05/08

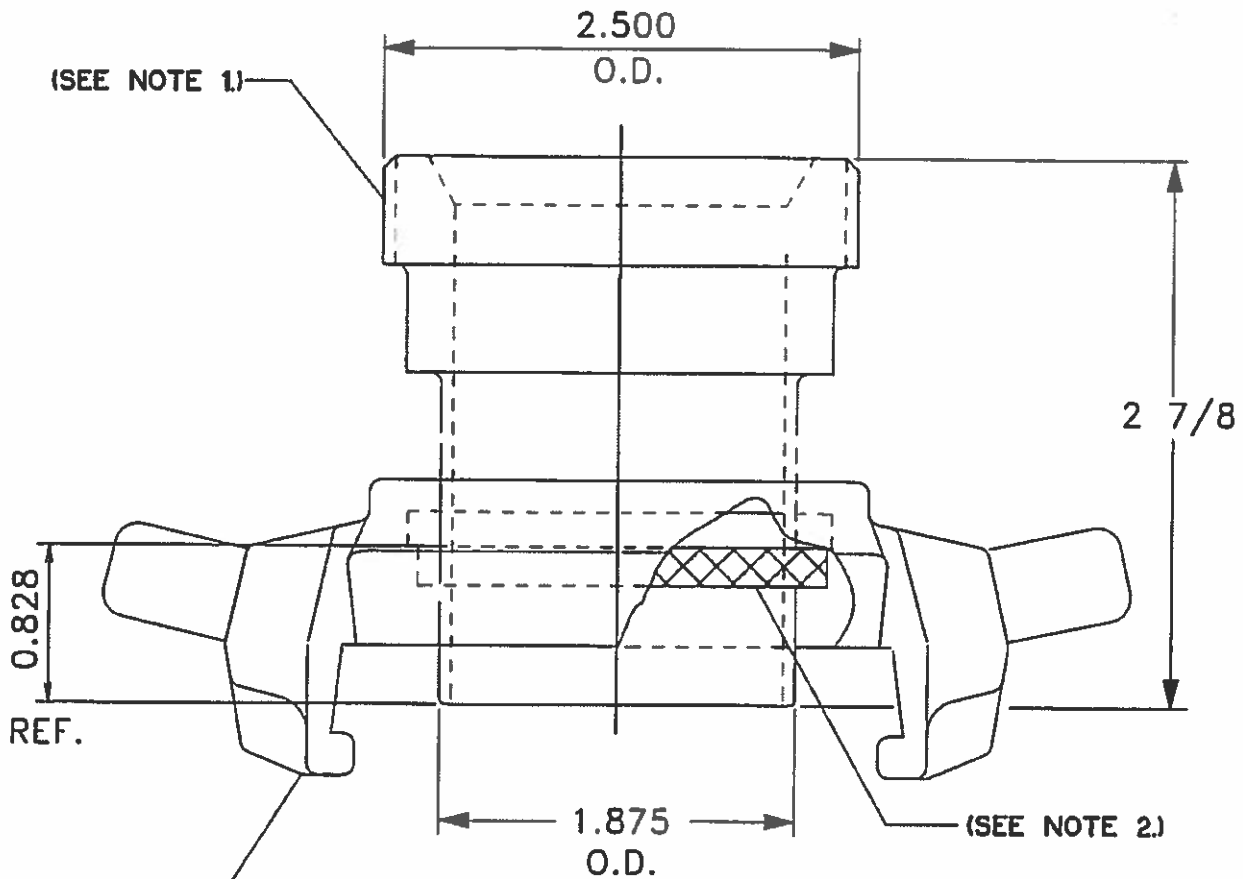
PT #	REQ'D	DESCRIPTION	MAT'L
18	1	SAMPLE COLLECTION BOTTLE, 1/2 LITER,D.O.T APP'D. & CAP	3045S
17	1	TUBE, FILL,UPPER, 0.500 O.D. x 0.062 WALL, A-2562-246	PHOPE
16	1	HANDLE, TUBE NUT, 1/4 DIA. EARS, 7/8 LG.,WELD'D TO PT# 13	3045S
15	1	TUBE, 1/2 O.D., 1 1/16LG., A-2562-246	3045S
14	1	SLEEVE, TUBE, #5177x8	3045S
13	1	NUT, TUBE, #5117x8	3045S
12	1	BUSHING, 1/2 TUBE x 3/8 NPT., FROM PT# 7, A-2562-243	3045S
11	1	VALVE, BALL, 3/8 NPTF, S-80 STYLE, ASTM A-351, CFBM	3165S
10	1	CONN., TUBE, STRAIGHT, 1/2 TUBE x 3/8 NPT., #5217x8x8	3045S
9	1	NUT, TUBE, 5117x8	3045S
8	1	SLEEVE, TUBE, #5177x8	3045S
7	1	CONN. HOSE, MODIFIED, #5217x8x6, A-2562-243	3045S
6	1	TUBE,VAPOR RET.,3/8 O.D.x0.065Wx3 15/16 LG, A-2562-243	3045S
5	1	RETAINING RING, CAP, A-2562-245	NYL
4	1	SEAL PLUG, SAMPLE BOTTLE HOLDER, A-2562-223	NTL
3	1	CAP, SAMPLE BOTTLE HOLDER, A-2562-295, BLK. ANODIZE	ALUM.
2	1	"O" RING, #2-221, 0.139 XSEC.	VITON
1	1	TUBE, FILL, LOWER, 0.500 O.D. x 0.046 WALL, A-2562-356	3045S

DIMENSIONAL TOLERANCE		TITLE	
FRAC.	DEC.	ANGLE	
+/-0.04H	+/-0.005	+/- 30'	ASSEMBLY
SCALE	REQ'D		1/2 LITER SAMPLING
NET ASSTY	A-2562.1B2 & 3		SAMPLING BOTTLE
			FILLING ATTACHMENT

DRAWN: F.S.G	DATE: 1/4/94	MHC INTERNATIONAL CORP NEW YORK
APP'D.	DATE:	
DWG. NO. B2562-185		REV K

DIMENSIONS : INCHES

UNAUTHORIZED USE, MANUFACTURE OR REPRODUCTION IN WHOLE OR PART, IS STRICTLY PROHIBITED.



CAM COUPLING MATES WITH
"TS" VALVE TYPES C2 & A2.

MATERIAL:

TYPE 304 STN STEEL.

NOTE :

- 1) THREADED END MATES WITH ANY MMC CLOSED SAMPLING BARREL.
- 2) REPLACEABLE GASKET, BUNA-N, PT.# S2562190-GK-327.

REV. B, 4/15/98

NEXT ASS'Y

A-2562-182 & -183

JOB NUM.

DRN BY : F.S.G

DATE : 4-15-94

PT # S2562TS-CPL-SHT

MMC
CLOSED SAMPLING BARREL
TO "TS" VALVE
SHORT COUPLING ADAPTOR

APP'D

DWG. NO.

A-2562-190

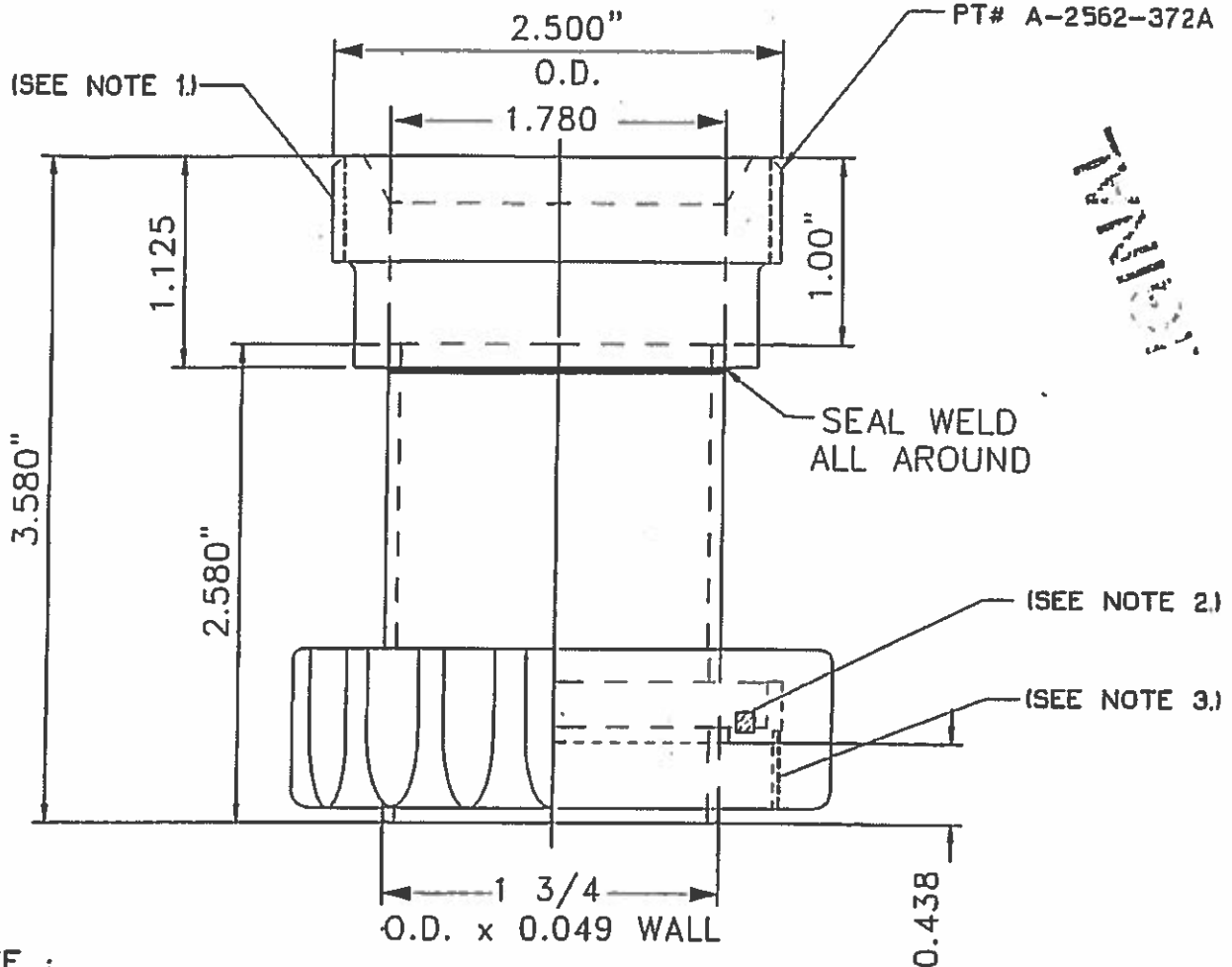
REV.

B

MMC INTERNATIONAL CORP.
INWOOD NEW YORK 11096

DIMENSIONS : INCHES

UNAUTHORIZED USE, MANUFACTURE OR REPRODUCTION IN WHOLE OR PART, IS STRICTLY PROHIBITED.



REV. B

NOTE :

- 1) THREADED END MATES WITH ANY MMC CLOSED SAMPLING BARREL.
- 2) STOP RING, C50/F50 TYPE
PT# B-2562-56 P/N C WITH TS-226 SQ. RING GASKET.
- 3) SECURING COLLAR THREADED TO MATE WITH TANKTECK VAPOR VALVE.
PT# A-2283-16

MATERIAL:

ALL TYPE 304 STN STEEL, WITH BRONZE VALVE SECURING COLLAR.

PT # SC2562TT-CPL-MMC

MMC ADAPTOR
CLOSED SC SAMPLING BARREL
TO TANKTECH TVC-02
VAPOR VALVE

REV. B ITEM 3 WAS PT# A-2283-16A, 05/15
REV. A UPDATED 09-18-2014

NEXT ASS'Y

JOB NUM.

MMC INTERNATIONAL CORP.
INWOOD NEW YORK 11096

DRN BY : F.S.G

DATE : 06-08-09

APP'D

DWG. NO.

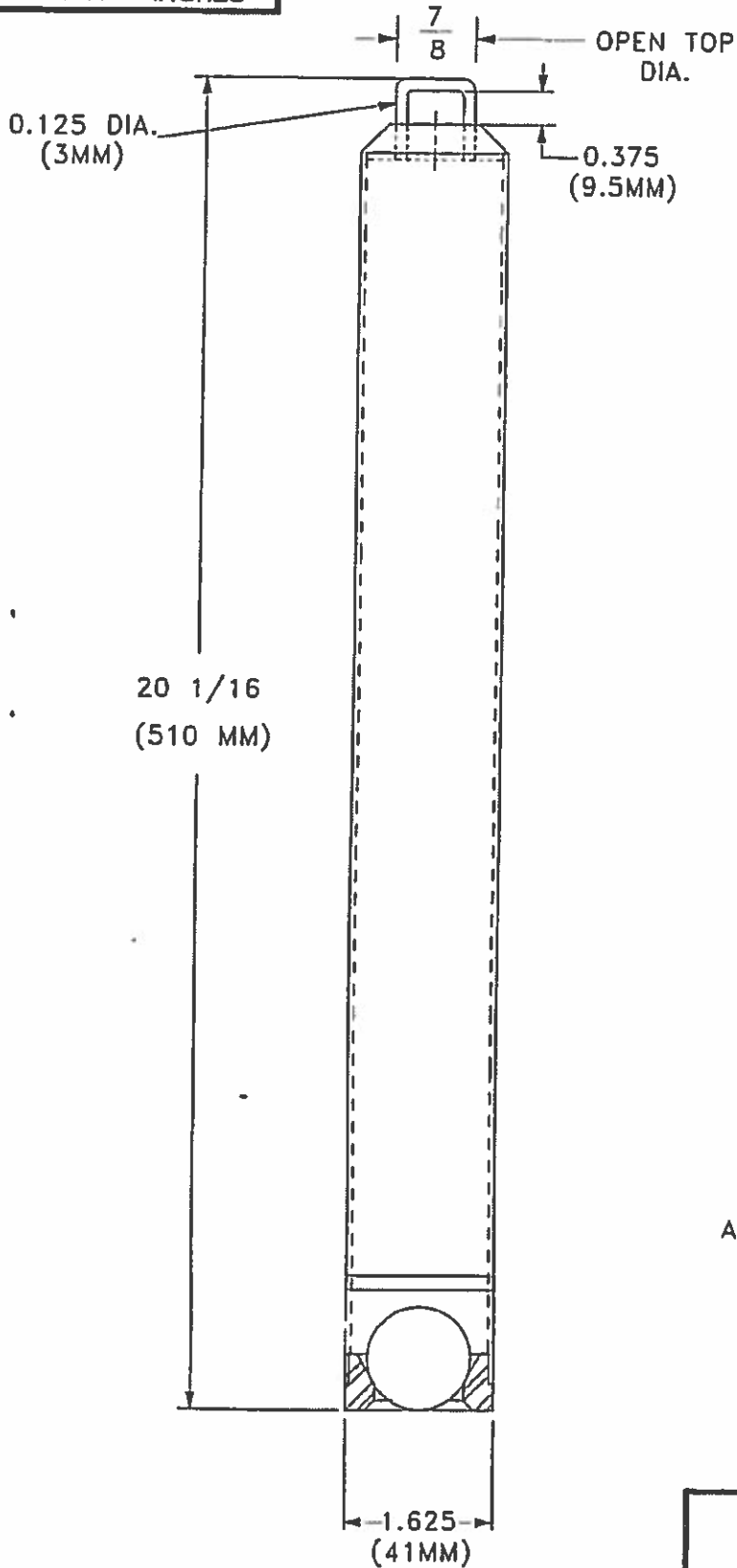
A-2562-372

REV.

B

DIMENSIONS : INCHES

UNAUTHORIZED USE, MANUFACTURE OR REPRODUCTION IN WHOLE OR PART, IS STRICTLY PROHIBITED



MATERIAL SPECIFICATION

ALL METAL PARTS TYPE 304 STN.STL. WITH TEFLON SEAL BALL

WGT. 2 LBS (0.9KG)

1/2 LITER
ZONE SAMPLER ASSEMBLY
FOR USE WITH ANY MMC
VAPOR VALVES OR TANK
TOP FIXTURES

NEXT ASS'Y

JOB NUM.

MMC INTERNATIONAL CORP.
INWOOD NEW YORK 11096

DRN BY : F.S.G

DATE : 3-8-95

APP'D

DWG. NO.

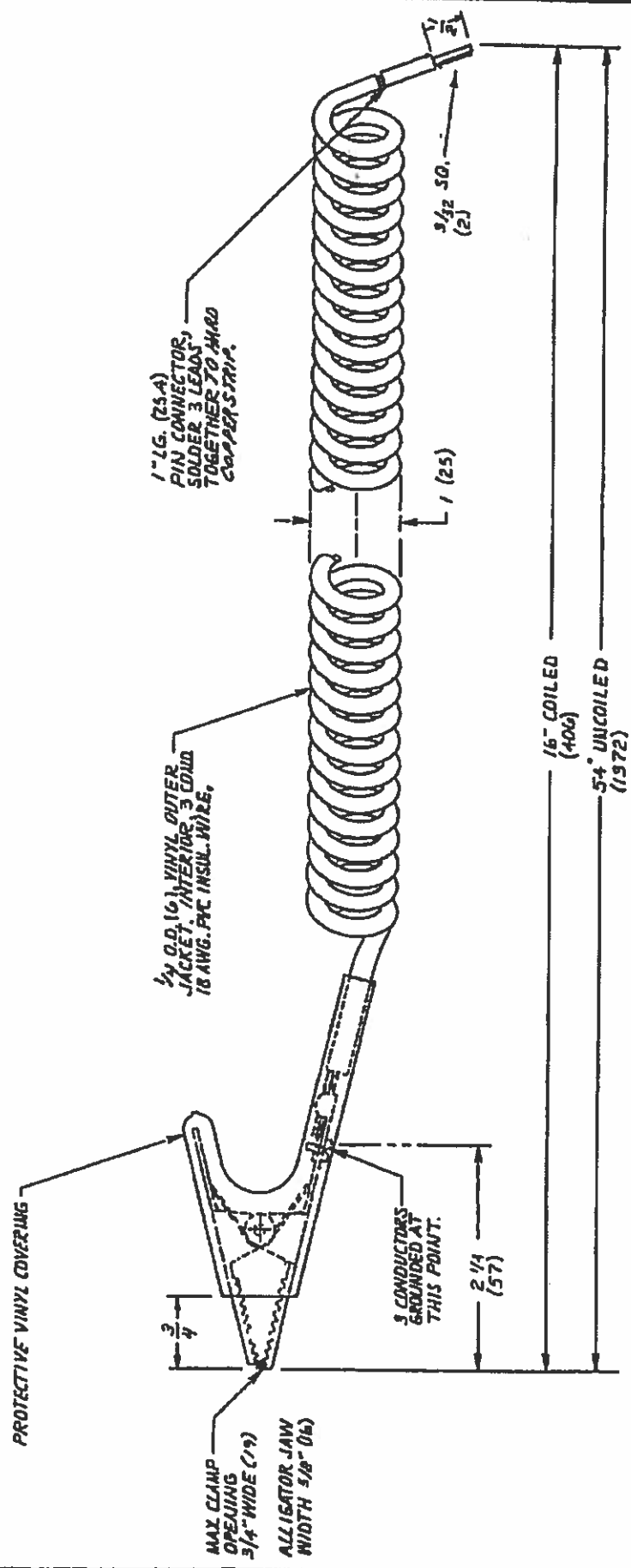
A-2518-1

REV.

UNAUTHORIZED REPRODUCTION OR
REPRODUCTION IN WHOLE OR IN PART
IS PROHIBITED.

REVISIONS

REV	DESCRIPTION	DATE	APPROV
1	REVISED/DATE	10/12/72	[Signature]



(DIA.) = 1/16"

DIMENSIONAL TOLERANCES UNLESS OTHERWISE SPECIFIED			
FRACTION	DEC.	ANG.	AS
± 1/16	± .005	± 30'	

SCALE FULL
NO. PAGES
PART: S-2562-13XX

CHECKED		DATE	
BY: S. BARBOUR	DATE: 10/12/72	DATE: 10/12/72	DATE: 10/12/72

GROUNDING CABLE WITH
GROUND CLAMP FOR ALL
PORTABLE CARGO GAUGING
AND SAMPLING EQUIPMENT

MARINE MOISTURE CONTROL CO., INC. HYDRO. L.L.	NEW YORK
DWG. NO. B-2562-72	REV A

ORIGINAL

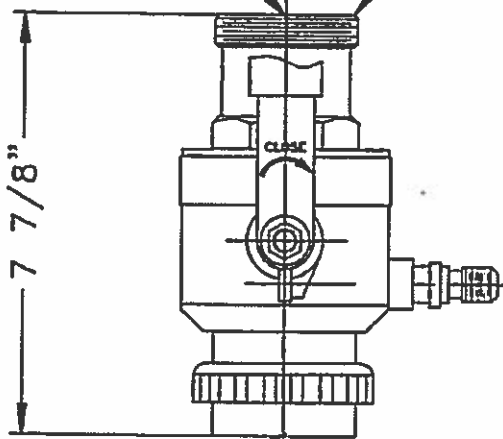
DIMENSIONS : INCHES

UNAUTHORIZED USE, MANUFACTURE OR REPRODUCTION IN WHOLE OR PART, IS STRICTLY PROHIBITED.

DIRECT CONNECTION TO ANY STANDARD MMC 1/2 LITER SAMPLER ASSEMBLY



MODIFIED MBS SAMPLE DIVERTER VALVE



DIRECT CONNECTION TO ANY EXISTING MMC "B" OR "MB" OR MMC ASIA C50, F50 GAUGING VALVES

1

PORTABLE SAMPLE COLLECTION ASS'Y FOR USE ON EXISTING MMC 'B' , 'MB', C50, F50 VAPOR VALVES

NEXT ASS'Y

JOB NUM.

MMC INTERNATIONAL CORP.
INWOOD NEW YORK 11096

DRN BY : F.S.G

DATE : 11-10-17

APP'D

DWG. NO.

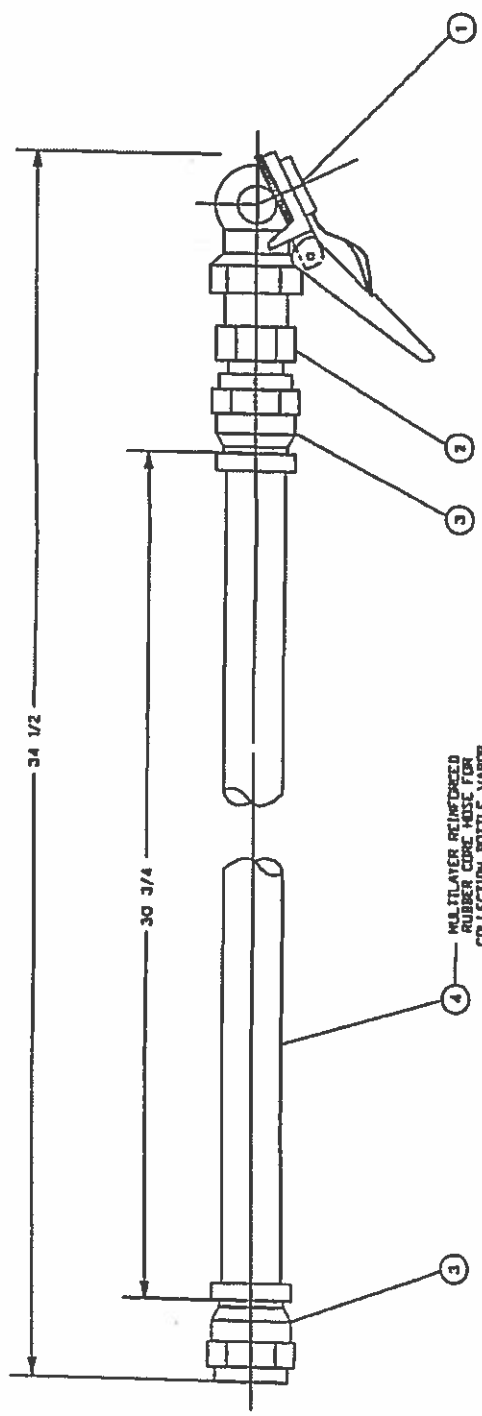
A-2318-55V

REV.

UNLESS OTHERWISE SPECIFIED, ALL DIMENSIONS ARE IN INCHES AND DECIMALS THEREOF.

REVISIONS

SYM	DESCRIPTION	DATE	APP'D
A	ADDD'D MAT'L I.D. PT'S 1&2	03/00	FSC



MULTILAYER REINFORCED RUBBER CORE HOSE FOR COLLECTION BOTTLE VAPOR RETURN TO CLOSED SYSTEM TAPE REEL HOUSING.

IMPORTANT

THIS HOSE MUST BE CONNECTED AS SHOWN ON THIS DRAWING. BEFORE VAPOR RELEASE TO AIRSHED, MAINTAIN PRESSURE BALANCE WITHIN TAPE REEL HOUSING FOR COMPLETE SAMPLE BOTTLE FILLING ACTION.

SEE DWG. A-2562-1B2 FOR ASSEMBLY OF THIS PART TO CLOSED SAMPLE GAUGING TAPE REEL HOUSING SHOWN ON DWG. S-2562-15M AND BOTTLE FILL ATTACHMENT SHOWN ON 82562-1B5

REQ'D	PT. NO.	DESCRIPTION	MAT'L
1	4	HOSE, VAPOR RETURN VALVE, PT# 2575-6	RUBBER
2	3	HOSE FITTING, UNIVERSAL TO S.A.E., PT# 4741-6	BRASS
1	2	CONNECTOR, UNION, MALE, PT# 5217 x 6	316SS
1	1	AIR CHUCK, VAPOR RETURN VALVE, PT# 9-882 1/4 NPTF.	316SS

DIMENSIONAL TOLERANCE		ANGLE	
FRACTION	DEC.		
+/- 0.010	+/- 0.005	+/- 30'	

SCALE	REQ'D	DATE	APP'D	DATE
NEXT	82562-1B5 & ASSY	57562-15M		

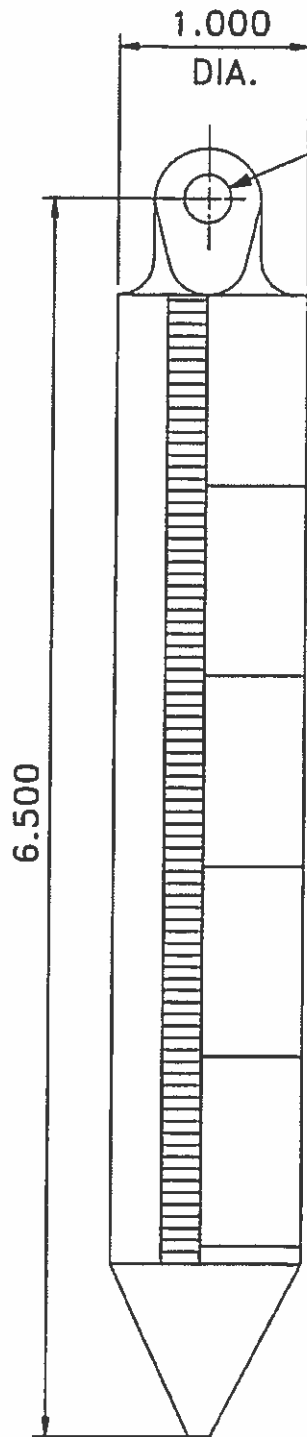
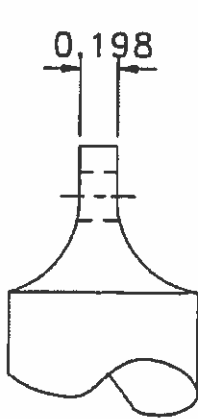
ASSEMBLY		MMC INTERNATIONAL CORP	
VAPOR RETURN HOSE 1/3 & 1/2 LITER CLOSED SAMPLING SYSTEM		INWOOD, NEW YORK	
DRAWN	F.S.C	DATE	9-23-94
REV	DWG. NO.	B-2562-238	A

ORIGINAL

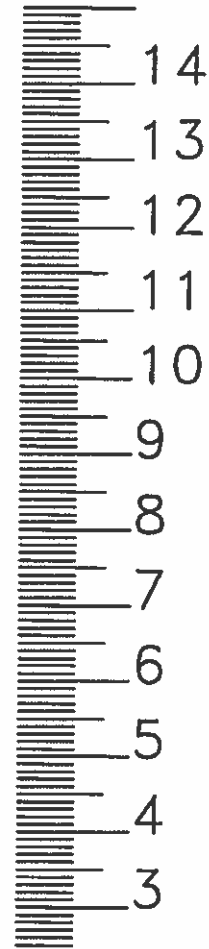
DIMENSIONS : INCHES

UNAUTHORIZED USE, MANUFACTURE OR REPRODUCTION IN WHOLE OR PART, IS STRICTLY PROHIBITED.

SUBMITTED FOR APPROVAL



ENGLISH
(1/8 INCH)



METRIC
(MM)

MATERIAL:

BRASS, BLK FILLED
ENGRAVED CHAR.
CLEAR LACQUER
OVERLAY.

WEIGHT:

1 LB. 4 3/4 OZ.
589 GRAMS.

OUTLINE DRAWING

STANDARD SOUNDING BOB
(INNAGE/DRYNESS)

NEXT ASS'Y

JOB NUM.

MMC INTERNATIONAL CORP.
INWOOD NEW YORK 11696

DRN BY : F.S.G

DATE : 10-28-94

APP'D

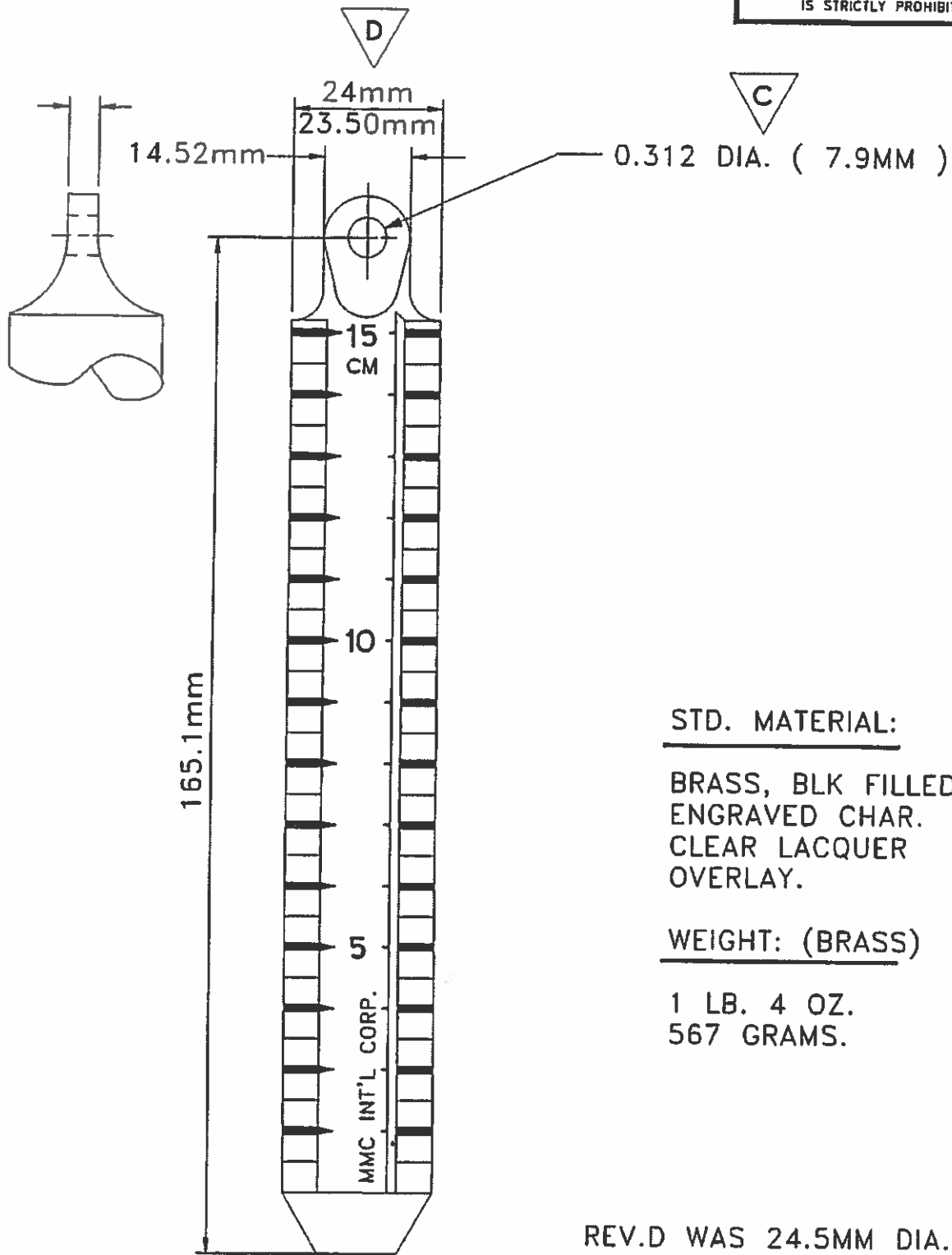
DWG. NO.

A-2670-1

REV.

DIMENSIONS : INCHES

UNAUTHORIZED USE, MANUFACTURE OR REPRODUCTION IN WHOLE OR PART, IS STRICTLY PROHIBITED.



STD. MATERIAL:

BRASS, BLK FILLED ENGRAVED CHAR. CLEAR LACQUER OVERLAY.

WEIGHT: (BRASS)

1 LB. 4 OZ.
567 GRAMS.

REV.D WAS 24.5MM DIA.

REV.C, WAS 1/4'DIA.HOLE
REV.B, REMOVED STN.STL. MAT'L OPTION, 02/15/06
SEE DWG. A-2670-2SS FOR STAINLESS STEEL VERSION

OUTLINE DRAWING

24.0 mm DIA. SOUNDING BOB
(INNAGE/DRYNESS)
CHECKING

NEXT ASS'Y

JOB NUM.

MMC INTERNATIONAL CORP.
INWOOD NEW YORK 11096

DRN BY : F.S.G

DATE : 12-01-00

APP'D

DWG. NO.

A-2670-2

REV.

D